
Bibliography of Wisconsin Herpetology, 2016-2025



with an Addendum to Previous Compilations

A Technical Report for the
Bureau of Natural Heritage Conservation

from the
Analysis Services Section
Bureau of Environmental Analysis & Sustainability
Wisconsin Department of Natural Resources
P.O. Box 7921
Madison, Wisconsin 53707-7921

March 2026



PUB-EA-055 2026

Summary: This report lists popular and technical articles, books, reports, and pamphlets that deal with various aspects of Wisconsin’s native amphibians and reptiles. It updates previous Wisconsin-specific listings and is intended to be inclusive for the period January 2016 through December 2025. It also includes an addendum listing works missed in previous compilations. Some entries refer to taxonomic, morphological, physiological, toxicological, or other studies in which specimens collected in Wisconsin were used. All contribute to our understanding of the state’s biological diversity and can aid conservation efforts.

Contents

1. Introduction	1
2. Methods and Organization of the Bibliography	1
3. Acknowledgments	1
4. Bibliography of Wisconsin Herpetology, 2016-2025	2
5. Addendum: Publications Omitted in Previous Compilations	44

Report Author

Dreux J. Watermolen

Analysis Services Section
Bureau of Environmental Analysis & Sustainability

Acknowledgements

Cover Illustrations: Pickerel frog, tiger salamander, spiny softshell turtle, and ring-necked snake.
Source: Arthur’s Free Clipart, www.arthursclipart.org.

The Wisconsin Department of Natural Resources provides equal opportunity in its employment, programs, services, and functions under an Affirmative Action Plan. If you have any questions, please write to Chief, Public Civil Rights, Office of Civil Rights, U.S. Department of the Interior, 1849 C. Street, NW, Washington, D.C. 20240.

This publication is available in alternative format (large print, Braille, etc.) upon request. For more information, please call the Accessibility Coordinator at 608-267-7490/TTY Access via relay - 711.

Without keeping up with the literature, I can't know what other people are doing or conceptualize my work. In addition, through reading the literature, I can find potential solutions to the barriers I am facing in my own research.

- L. Kmaerlin

Our job is to push the frontier of what is already known, so we need to be aware of where this frontier is. However, trying to stay up to date with the literature is tremendously difficult... The number of journals and venues is very large, and it continues to grow.

- B. Masia

Our function as scientists is to push the envelope and create new knowledge and understanding, so we always need to be as up to date as we can be in our areas.

- J.C. Austin



* Selected quotes from: Elisabeth Pain's "How to keep up with the scientific literature" in *Science*, November 30, 2016.
<http://www.sciencemag.org>

1. Introduction

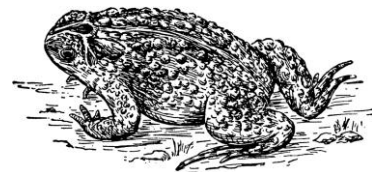
The bibliography presented herein supplements previous Wisconsin-specific compilations and lists publications that deal with various aspects of Wisconsin's amphibians and reptiles. Many of the papers present natural history observations or the results of ecological investigations. Other works explore conservation topics. Some entries refer to taxonomic, physiological, parasitological, toxicological, or other studies in which specimens from Wisconsin were used. This compilation can aid local managers and researchers in understanding what species occur in our state, as well as their phylogenetic relationships, geographic distributions, life histories, and ecological traits, all aspects that are important to modern conservation practice.

2. Methods and Organization of the Bibliography

I followed the methods described by Watermolen (2013, 2016)¹ to compile and organize the bibliography. The bibliography is inclusive for the period January 2016 through December 2025. An addendum includes works that were missed in previous compilations. As with the earlier listings, some entries include brief annotations to aid users, particularly when titles are obscure or when the Wisconsin connection is not immediately clear. Every attempt was made to ensure the accuracy of the entries; users, however, may want to check citations against actual references to avoid perpetuating any errors that may have crept into this listing. Time and logistic constraints precluded development of cross-referenced taxonomic, geographic, and subject indices like those in the previous compilations.

3. Acknowledgments

Numerous conservation biologists, ecologists, parasitologists, toxicologists, wildlife managers, zoologists, concerned citizens, and others have contributed to a more robust knowledge of Wisconsin's herpetofauna. Their works are the basis for this compilation and their efforts are to be commended. I thank Andrew Badje and Rori Paloski, Bureau of Natural Heritage Conservation, and Joshua Kapfer, University of Wisconsin-Whitewater, for sharing references with me over the years. They remain valued colleagues.



Drawing from Ellsworth D. Foster (ed.) *The American Educator* (Vol. 8) (Chicago, IL: Ralph Durham Company, 1921) via ClipArt ETC.

¹ Watermolen, D.J. 2013. *Wisconsin Herpetology, 2001-2010*. Miscellaneous Publication PUB-SS-1127. Bureau of Science Services, Wisconsin Department of Natural Resources, Madison.
Watermolen, D.J. 2016. *Wisconsin Herpetology, 2011-2015, with an Addendum to Previous Compilations*. Miscellaneous Publication PUB-SS-1173. Bureau of Science Services, Wisconsin Department of Natural Resources, Madison.

4. Bibliography of Wisconsin Herpetology, 2016-2020

Entries appear alphabetically by author in a standard bibliographical format. Junior authors appear alphabetically and are cross-referenced to senior authors.

- Adamovicz, L. – see Ready et al. 2025, and Sander et al. 2021.
- Adamovicz, L.A. – see Winter et al. 2020.
- Adams, M.J. – see Kain et al. 2025.
- Adams-Cameron, M. – see Walters et al. 2016.
- Adamski, J. M. – see Hileman et al. 2017.
- Ajileye, K. – see Walters et al. 2016.
- Alexander, B.J., and J.S. Cannizzaro, IV. 2023. Natural history notes: *Ambystoma maculatum* (Spotted Salamander). Parasitism. *Herpetological Review* 54(2):256.
- Allender, M.C. – see Hughes et al. 2024, Ready et al. 2025, Sander et al. 2021, and Winter et al. 2020.
- Allender, M.C., M.J. Ravesi, E. Haynes, E. Ospina, C. Petersen, C.A. Phillips, and R. Lovich. 2020. Ophidiomycosis, an emerging fungal disease of snakes: Targeted surveillance on military lands and detection in the western US and Puerto Rico. *PLoS ONE* 15(1):e0240415.
- Amin, O.M., and A. Elnaggar. 2022. Diagnosis of helminth parasites in tissue sections of freshwater fish from Wisconsin, USA. *Scientia Parasitologica* 23(1-2):1-19.
- Anchor, C. – see Ready et al. 2025.
- Anderson, J.T. – see Staggs et al. 2024.
- Anderson, L.J. – see Bowne et al. 2018.
- Anderson, N.J., and J.M. Kapfer. 2022. Eastern tiger salamander, *Ambystoma tigrinum* (Green 1825). Pp. 330-343 In J.M. Kapfer and D.J. Brown (eds.). *Amphibians and Reptiles of Wisconsin*. University of Wisconsin Press, Madison.
- Anderson, T. – see Kolhoff et al. 2024.
- Anderson, T.C. – see Walters et al. 2016.
- Andersson, K.E. – see Winter et al. 2020.
- Anonymous. 2016. *Natural Heritage Conservation Program 2016 Annual Report*. PUB-NH 0900-2016. Wisconsin Department of Natural Resources, Madison. (Includes information on Wisconsin's second county record for lined snake.)
- Anonymous. 2017. *Natural Heritage Conservation Program 2017 Annual Report*. PUB-NH 0900-2017. Wisconsin Department of Natural Resources, Madison. (Includes information on wood turtle nest conservation measures, massasauga survey efforts, cricket frog recovery, highway underpasses for turtle conservation, and dog-aided surveys for ornate box turtles.)
- Anonymous. 2023. Question and answer. *Wisconsin Natural Resources Magazine* 47(3):7. (Includes a reader's question about snakes warming themselves on roadways.)
- Anthonyamy, W.J. B. – see Jordan et al. 2024.
- Anton, T.G. – see Casper et al. 2020a, Casper et al. 2020b, Casper et al. 2021, Casper et al. 2022, and Hileman et al. 2017.
- Apodaca, J.J. – see Marsh et al. 2017.
- Arrowood, A. – see Arrowood et al. 2019.
- Arrowood, C., A. Arrowood, and A.F. Badje. 2019. Geographic distribution: *Glyptemys insculpta* (Wood Turtle). *Herpetological Review* 50(2):324. (Langlade Co.)
- Arsnoe, I.M. – see Ginsberg et al. 2020.
- Austin, A.E. – see Morrissey et al. 2020.

- Babcock, L.R. – see Morrissey et al. 2020.
- Backlin, A.R. – see Kain et al. 2025.
- Badje, A. - see Brown et al. 2025, and Staggs et al. 2023.
- Badje, A.F. – see Arrowood et al. 2019, Bartholmai and Badje 2019, Beard et al. 2024, Buchanan et al. 2022, Cannizzaro and Badje 2023, Collins and Badje 2016, Kessler and Badje 2017, Lafleur et al. 2023, Lundeen and Badje 2017, Millis and Badje 2019, Moe and Badje 2017, Paloski et al. 2016, Paloski et al. 2018, Paloski et al. 2022, Schuler and Badje 2019, Sheldon and Badje 2016, Spaid et al. 2025, Staggs et al. 2024, Staggs et al. 2025, Stevenson et al. 2017, Stevenson and Badje 2017, Watson et al. 2020, White et al. 2020a, and White et al. 2020b.
- Badje, A.F. 2017a. Geographic distribution: *Hyla chrysoscelis* (Cope's Gray Treefrog). *Herpetological Review* 48(3):584. (Racine Co.)
- Badje, A.F. 2017b. Geographic distribution: *Hyla versicolor* (Gray Treefrog). *Herpetological Review* 48(4):806-807. (Buffalo and Winnebago Cos.)
- Badje, A.F. 2017c. Geographic distribution: *Lithobates catesbeianus* (American Bullfrog). *Herpetological Review* 48(4):808. (Marquette and Winnebago Cos.)
- Badje, A.F. 2018. Geographic distribution: *Pseudacris maculata* (Boreal Chorus Frog). *Herpetological Review* 49(2):283. (Jackson Co.)
- Badje, A.F. 2019. Geographic distribution: *Glyptemys insculpta* (Wood Turtle). *Herpetological Review* 50(3):522-523. (Clark Co.)
- Badje, A.F. 2020a. Geographic distribution: *Apalone spinifera* (Spiny Softshell). *Herpetological Review* 51(1):72. (Winnebago Co.)
- Badje, A.F. 2020b. Geographic distribution: *Emydoidea blandingii* (Blanding's Turtle). *Herpetological Review* 51(1):73. (Taylor Co.)
- Badje, A.F. 2020c. Geographic distribution: *Pantherophis vulpinus* (Eastern Foxsnake). *Herpetological Review* 51(1):80. (Walworth Co.)
- Badje, A.F. 2020d. Geographic distribution: *Hyla versicolor* (Gray Treefrog). *Herpetological Review* 51(3):533. (Langlade, Menominee, and Portage Cos.)
- Badje, A.F. 2020e. Geographic distribution: *Apalone spinifera* (Spiny Softshell). *Herpetological Review* 51(3):535. (Rusk Co.)
- Badje, A.F. 2020f. Geographic distribution: *Graptemys geographica* (Northern Map Turtle). *Herpetological Review* 51(4):771. (Marathon Co.)
- Badje, A.F. 2021a. Geographic distribution: *Hyla versicolor* (Gray Treefrog). *Herpetological Review* 52(1):77. (Green Lake Co.)
- Badje, A.F. 2021b. Geographic distribution: *Pseudacris maculata* (Boreal Chorus Frog). *Herpetological Review* 52(1):78. (Taylor Co.)
- Badje, A.F. 2022a. Geographic distribution: *Hyla chrysoscelis* (Cope's Gray Treefrog). *Herpetological Review* 53(1):71. (Green Lake Co.)
- Badje, A.F. 2022b. Geographic distribution: *Aplone spinifera* (Spiny Softshell). *Herpetological Review* 53(1):75. (Wood Co.)
- Badje, A.F. 2022c. Geographic distribution: *Graptemys geographica* (Northern Map Turtle). *Herpetological Review* 52(4):793. (Wood Co.)
- Badje, A.F., T.J. Brandt, T.L. Bergeson, R.A. Paloski, and J.M. Kapfer. 2021. Spring movement ecology of Blanchard's cricket frog (*Acris blanchardi*) in southwestern Wisconsin, USA. *Herpetological Conservation and Biology* 16(2):271-280.
- Badje, A.F., T.J. Brandt, T.L. Bergeson, R.A. Paloski, J.M. Kapfer, and G.W. Shurrman. 2016. Blanchard's cricket frog *Acris blanchardi* overwintering ecology in southwestern Wisconsin. *Herpetological Conservation and Biology* 11(1):101-111.
-

- Badje, A.F., D.J. Brown, J.M. Staggs, L.V. Carlson, and C.N. Lapin. 2023. Wood turtle (*Glyptemys insculpta*) site-level abundances and demographics in Wisconsin. Pp. 3-4 *In* J.R. Meck, M.T. Jones, T.S.B. Akre, A. Badje, et al. (eds.). 2023. Abstracts from the 3rd Emydine Conservation Symposium, Huntingdon, PA. July 10–12, 2023. American Turtle Observatory, New Salem, MA.
- Badje, A.F., D.J. Brown, J.M. Staggs, L.V. Carlson, and C.N. Lapin. 2024. Baseline abundances and population demographics at wood turtle (*Glyptemys insculpta*) monitoring sites in Wisconsin. *Northeastern Naturalist* 31(Special Issue 12):G28-G46.
- Badje, A.F., and A.I. Dyke. 2018. Geographic distribution: *Anaxyrus fowleri* (Fowler's Toad). *Herpetological Review* 49(4):706-707. (La Crosse Co.)
- Badje, A.F., and J.A. Flory. 2020. Geographic distribution: *Graptemys ouachitensis* (Ouachita Map Turtle). *Herpetological Review* 51(1):73-74. (Jackson Co.)
- Badje, A.F., R.A. Paloski, J. Karow, G. Jensen, J. Robaidek, and J. Watson. 2020. Geographic distribution: *Graptemys ouachitensis* (Ouachita Map Turtle). *Herpetological Review* 51(1):73. (Adams and Juneau Cos.)
- Badje, A.F., and J.D. Peterson. 2022a. Spring Peeper, *Pseudacris crucifer* (Wied-Neuwied 1838). Pp. 206-216 *In* J.M. Kapfer and D.J. Brown (eds.). *Amphibians and Reptiles of Wisconsin*. University of Wisconsin Press, Madison.
- Badje, A.F., and J.D. Peterson. 2022b. American bullfrog, *Lithobates catesbeianus* (Shaw 1802). Pp. 229-240 *In* J.M. Kapfer and D.J. Brown (eds.). *Amphibians and Reptiles of Wisconsin*. University of Wisconsin Press, Madison.
- Badje, A.F., and R.A. Staffen. 2021. Geographic distribution: *Graptemys geographica* (Northern Map Turtle). *Herpetological Review* 52(1):79. (Pepin Co.)
- Badje, A.F., S.E. Viernum, and J.D. Peterson. 2022. Boreal chorus frog, *Pseudacris maculata* (Agassiz 1850) Pp. 217-228 *In* J.M. Kapfer and D.J. Brown (eds.). *Amphibians and Reptiles of Wisconsin*. University of Wisconsin Press, Madison.
- Bagby, R. – see Walters et al. 2016.
- Bailey, J. – see Standish et al. 2018.
- Bailey, R.L. – see Hileman et al. 2017.
- Baker, R. – see Walters et al. 2016.
- Baker, S.J. – see Hileman et al. 2017.
- Baldwin, R.F. – see Dertien et al. 2020.
- Balk, M.L. – see Cordero et al. 2024.
- Ballmann, A.E. – see Isidoro-Ayza et al. 2019, and Lorch et al. 2016.
- Banks, K.M. – see Lafleur et al. 2023.
- Barends, J.M., and B. Maritz. 2022. Snake predators of bird eggs: A review and bibliography. *Journal of Field Ornithology* 93(2):1.
- Barichivich, W.J. – see Kain et al. 2025.
- Barr, B. – see Morrissey et al. 2020.
- Barrett, K. – see Dertien et al. 2020.
- Bartels, A. – see Paisley et al. 2024.
- Bartholmai, J., and A.F. Badje. 2019. Geographic distribution: *Emydoidea blandingii* (Blanding's Turtle). *Herpetological Review* 50(2):324. (Dodge Co.)
- Basler, C. – see Kiebler et al. 2020.
- Bateman, B.L. – see Hamilton et al. 2018.
- Beard, A., D.J. Brown, C.M. Lituma, and M.T. Jones. 2023. Influence of temporary emigration on wood turtle (*Glyptemys insculpta*) detection and abundance estimates. P. 4 *In* J.R. Meck, M.T. Jones, T.S.B. Akre, A. Badje, et al. (eds.). 2023. Abstracts from the 3rd Emydine

- Conservation Symposium, Huntingdon, PA. July 10–12, 2023. American Turtle Observatory, New Salem, MA.
- Beard, A.N. 2024. Informing standardized wood turtle (*Glyptemys insculpta*) population monitoring: Influences of sampling approach and turtle behavior on model estimation. M.S. thesis. West Virginia University, Morgantown, WV.
- Beard, A.N., D.J. Brown, E.T. Hileman, M.T. Jones, J.M. Staggs, R.A. Moen, A.F. Badje, and C.M. Lituma. 2024. Influence of temporary emigration on wood turtle (*Glyptemys insculpta*) detectability, with implications for abundance estimation. *PLoS ONE* 19(4):e0302170.
- Beard, K.H. – see Marsh et al. 2017.
- Becker, D.C. – see Hughes et al. 2023.
- Beever, E. – see Casper et al. 2018.
- Behravesh, C.B. – see Kiebler et al. 2020, and Walters et al. 2016.
- Bell, J.M. – see Marsh et al. 2017.
- Bell, M.A. – see Huijser and Bell 2025.
- Bell, T.A., Jr. – see Hileman et al. 2017.
- Berg, C.S. – see Booth et al. 2024, King et al. 2022, and Sajdak et al. 2022.
- Bergeson, T.L. – see Badje et al. 2016, Badje et al. 2021, and Paloski et al. 2018.
- Bergeson, T.L.E. – see Paloski et al. 2022, and Paloski et al. 2022.
- Bergey, E.A. – see Wu and Bergey 2017.
- Bernstein, J.M. – see Burbrink et al. 2022.
- Bernstein, N.P. – see Hughes et al. 2024.
- Bernstein, N.P., R.H. Fendrich, and S.A. McCollum. 2023. Do home range, movement patterns, and habitat use of ornate box turtles (*Terrapene ornata ornata*) differ among age classes? *Journal of Herpetology* 57(1):1-10.
- Bieser, N.D. – see Hileman et al. 2017.
- Bird, K. – see Kiebler et al. 2020.
- Bissell, K.M. – see Hileman et al. 2017.
- Blais, B.R., B.E. Smith, J.S. Placyk, Jr., G.S. Casper, and G.M. Spellman. 2021. Phylogeography of the smooth greensnake, *Opheodrys vernalis* (Squamata: Colubridae): divergent lineages and variable demographics in a widely distributed yet enigmatic species. *Biological Journal of the Linnean Society* 134:940-957.
- Blegan, D. 2016. The great pretender. *Wisconsin Natural Resources Magazine* 40(6):24-15. (Includes natural history information about hog-nosed snakes.)
- Blehert, D.S. – see Ip et al. 2016, and Lorch et al. 2016.
- Bloch, C.P. – see Bowne et al. 2018.
- Blodgett, D. – see Lorch et al. 2016.
- Bolek, M.G. – see Shannon and Bolek 2023, and Shannon et al. 2025.
- Booth, W., B.A. Levine, C.S. Berg, and G.W. Schuett. 2024. Facultative parthenogenesis in a zoo-held northern water snake, *Nerodia sipedon*. *Zoo Biology* 43(6):570-574.
- Bopp, C. – see Walters et al. 2016.
- Borders, J. – see Walters et al. 2016.
- Bosch, S. – see Walters et al. 2016.
- Bottichio, L. – see Kiebler et al. 2020.
- Bougie, T. – see Vraniak et al. 2017.
- Bougie, T., L. Carlson, and C.N. Lapin. 2024. A new variation on nest protection for wood turtle nest sites. *Northeastern Naturalist* 31(Special Issue 12):G171-G183.

- Bougie, T.A., N.W. Byer, C.N. Lapin, M.Z. Peery, J.E. Woodford, and J.N. Pauli. 2020. Wood turtle (*Glyptemys insculpta*) nest protection reduces depredation and increases success, but annual variation influences its effectiveness. *Canadian Journal of Zoology* 98:715-724.
- Bougie, T.A., L.V. Carlson, R.A. Staffen, E.C. Pauly-Hubbard, and N.G. Schlitz. 2023. Geographic distribution: *Ambystoma maculatum* (Spotted salamander). *Herpetological Review* 53(4):625. (Outagamie Co.)
- Bougie, T.A., M.Z. Peery, C.N. Lapin, J.E. Woodford, and J.N. Pauli. 2022. Not all management is equal: A comparison of methods to increase wood turtle population viability. *Journal of Wildlife Management* 86:e22234.
- Bougie, T.A., M.Z. Peery, C.N. Lapin, J. Woodford, and J. Pauli. 2023. Not all management is equal: A comparison of methods to increase wood turtle population viability. Pp. 4-5 In J.R. Meck, M.T. Jones, T.S.B. Akre, A. Badje, et al. (eds.). 2023. Abstracts from the 3rd Emydine Conservation Symposium, Huntingdon, PA. July 10–12, 2023. American Turtle Observatory, New Salem, MA.
- Bowne, D.R., B.J. Cosentino, L.J. Anderson, C.P. Bloch, S. Cooke, P.W. Crumrine, J. Dallas, A. Doran, J.J. Dosch, D.L. Druckenbrod, R.D. Durtsche, D. Garneau, K.S. Genet, T.S. Fredericksen, P.A. Kish, M.B. Kolozsvary, F.T. Kuserk, E.S. Lindquist, C. Mankiewicz, J.G. March, T.J. Muir, K.G. Murray, M.N. Santulli, F.J. Sicignano, P.D. Smallwood, R.A. Urban, K. Winnett-Murray, and C.R. Zimmermann. 2018. Effects of urbanization on the population structure of freshwater turtles across the United States. *Conservation Biology* 32(5):1,150-1,161. (See also response by Lambert and Steen 2019.)
- Bozarth, C. – see Marsh et al. 2017.
- Bracey, A.M. – see Tozer et al. 2025.
- Bradke, D.R. – see Hileman and Bradke 2022, and Hileman et al. 2017.
- Brady, V.J. – see Tozer et al. 2025.
- Braithwaite, T. – see Davy et al. 2021.
- Brandt, A.L. – see Hennes et al. 2018.
- Brandt, T.J. – see Badje et al. 2016 and Badje et al. 2021.
- Breisch, A.R., W.H. Martin, J.B. Sealy, C.E. Petersen, and E. Possardt (eds.). 2021. *The Timber Rattlesnake: Life History, Distribution, Status, and Conservation Action Plan*. Partners in Amphibian and Reptile Conservation Technical Publication CAP-1. Amphibian and Reptile Conservancy, Nashville, TN.
- Breitenbach, L. – see Schindler et al. 2024.
- Breitenbach, L., R.A. Paloski, and E.R. Wild. 2020. Geographic distribution: *Opheodrys vernalis* (Smooth Greensnake). *Herpetological Review* 51(4):782.
- Breitenbach, L., and E.R. Wild. 2016a. Geographic distribution: *Diadophis punctatus* (Ring-necked Snake). *Herpetological Review* 47(2):262. (Pepin Co.)
- Breitenbach, L., and E.R. Wild. 2016b. Geographic distribution: *Lampropeltis triangulum* (Eastern Milksnake). *Herpetological Review* 47(2):263. (Pepin Co.)
- Brininger, W. – see Sadinski et al. 2018.
- Brockman, T.G. 2024. Wood turtle (*Glyptemys insculpta*) occupancy and spatial ecology in working forest landscapes. M.S. thesis. Michigan State University, East Lansing, MI.
- Brockman-Mederas, K.M. 2016. Geographic distribution: *Sternotherus odoratus* (Eastern Musk Turtle). *Herpetological Review* 47(3):423. (Shawano Co.)
- Brodman, R.D. 2022. Spotted salamander, *Ambystoma maculatum* (Shaw 1802). Pp. 318-329 In J.M. Kapfer and D.J. Brown (eds.). *Amphibians and Reptiles of Wisconsin*. University of Wisconsin Press, Madison.
- Bronikowski, A.M. – see Reinke et al. 2020.

- Brown, C.T. – see Freitas et al. 2017.
- Brown, C.T., J.M. Yahn, and W.H. Karasov. 2021. Warmer temperature increases toxicokinetic elimination of PCBs and PBDEs in northern leopard frog larvae (*Lithobates pipiens*). *Aquatic Toxicology* 234:105806.
- Brown, D. – see Staggs et al. 2023.
- Brown, D.J. – see Badje et al. 2023, Badje et al. 2024, Beard et al. 2023, Beard et al. 2024, Donner and Brown 2022a, Donner and Brown 2022b, Kapfer and Brown 2022a, Kapfer and Brown 2022b, Kapfer and Brown 2022c, Lapin et al. 2019, Spaid et al. 2025, Staggs et al. 2024, Staggs et al. 2025, and Wild and Brown 2022.
- Brown, D.J. 2022. American toad, *Anaxyrus americanus* (Holbrook 1836). Pp. 148-160 In J.M. Kapfer and D.J. Brown (eds.). *Amphibians and Reptiles of Wisconsin*. University of Wisconsin Press, Madison.
- Brown, D.J., A. Badje, G. Crozier, T. Markle, and J. Tamplin. 2025. Turtles all the way down: Collaborating to inform wood turtle conservation efforts in the Upper Midwest. *Wildlife Professional* (March/April):50-54.
- Brown, D.J., and C.N. Lapin. 2022. Wood turtle, *Glyptemys insculpta* (LeConte 1830). Pp. 768-783 In J.M. Kapfer and D.J. Brown (eds.). *Amphibians and Reptiles of Wisconsin*. University of Wisconsin Press, Madison.
- Brown, D.J., and C.A. Ribic. 2022. Past, present, and potential future landscapes of Wisconsin, with emphasis on amphibian and reptile distribution. Pp. 25-48 In J.M. Kapfer and D.J. Brown (eds.). *Amphibians and Reptiles of Wisconsin*. University of Wisconsin Press, Madison.
- Brown, J. – see Sadinski et al. 2018.
- Brunner, J.I., D.H. Olson, M.J. Gray, D.L. Miller, and A.I.J. Duffus. 2021. Global patterns of ranavirus detections. *FACETS* 6:912-924.
- Buchanan, J.L., E.C. Pauly-Hubbard, R.A. Paloski, and A.F. Badje. 2022. Geographic distribution: *Graptemys ouachitensis* (Ouachita Map Turtle). *Herpetological Review* 53(1):76.
- Buckardt, E.M., G.A. Glowacki, and J.P. Gibbs. 2020. Environmental cues that trigger nesting by Blanding's turtles (*Emydoidea blandingii*). *Chelonian Conservation and Biology* 19(1):67-71.
- Bulté, G. – see Vogt et al. 2018.
- Bundgaard, A., A.M. James, W. Joyce, M.P. Murphy, and A. Fago. 2018. Suppression of reactive oxygen species generation in heart mitochondria from anoxic turtles: the role of complex I S-nitrosation. *Journal of Experimental Biology* 221:1-10. (Study used *Trachemys scripta elegans* specimens provided by a Wisconsin supplier.)
- Burbrink, F.T. – see Harrington et al. 2024.
- Burbrink, F.T., J.M. Bernstein, A. Kuhn, M. Gehara, and S. Ruan. 2022. Ecological divergence and the history of gene flow in the Nearctic milksnakes (*Lampropeltis triangulum* complex). *Systematic Biology* 71(4):839-858.
- Burns, D.A. 2020. Compilation of mercury data and associated risk to human and ecosystem health, Bad River Band of Lake Superior Chippewa, Wisconsin. U.S. Geological Survey Open-File Report 2020-1095. 19 pp. doi: <https://doi.org/10.3133/ofr20201095>.
- Burns, G. 2020. Geographic distribution: *Ambystoma laterale* (Blue-spotted Salamander). *Herpetological Review* 51(1):66-67. (Calumet Co.)
- Burnside, M. – see Cannizzaro et al. 2023.
- Businga, N.K. – see Isidoro-Ayza et al. 2019.
- Byer, N.W. – see Bougie et al. 2020.

- Byer, N.W., E.D. Fountain, B.N. Reid, K. Miller, P.J. Kulzer, and M.Z. Peery. 2021. Land use and life history constrain adaptive genetic variation and reduce capacity for climate change adaptation in turtles. *BMC Genomics* 22:837.
- Byer, N.W., B.N. Reid, R.P. Thiel, and M.Z. Peery. 2020. Strong climate associations but no temporal trends in nesting phenology of Blanding's turtles (*Emydoidea blandingii*). *Herpetologica* 76(4):396-402.
- Byers, C.M., C.A. Ribic, D.W. Sample, J.D. Dadisman, and M.R. Guttery. 2017. Grassland bird productivity in warm season grass fields in southwest Wisconsin. *American Midland Naturalist* 178(1):47-63. (Includes information on snake predation.)
- Calsbeek, R. – see Reinke et al. 2017.
- Cai, H. – see Davy et al. 2021.
- Campa, H, III. – see Hileman et al. 2017.
- Campbell, D. – see Davy et al. 2021.
- Cannizzaro, J.S., IV – see Alexander and Cannizzaro 2023, Lafleur et al. 2023, and Manninen and Cannizzaro 2023.
- Cannizzaro, J.S., IV. 2023. Elucidating aposematic patterns in North American hylids. M.S. thesis. University of Wisconsin-Milwaukee, Milwaukee.
- Cannizzaro, J.S., IV, and A.F. Badje. 2023. Natural history notes: *Pseudacris maculata* (Boreal Chorus Frog). Unusual chorusing. *Herpetological Review* 54(3):433-434.
- Cannizzaro, J.S., IV, M. Burnside, and H. Warner. 2023. Natural history notes: *Hyla versicolor* (Gray Treefrog). Predation. *Herpetological Review* 54(4):631.
- Cannizzaro, J.S., IV, and G. Höbel. 2023. Hidden black and yellow thigh color acts as an aposematic signal in the eastern gray treefrog (*Hyla versicolor*). *Ethology* 129:679-685.
- Cannizzaro, J.S., IV, S.L. Koch, and W.H. Graser, III. 2023. First evidence of muskrat (*Ondatra zibethicus*) in the diet of the Blanding's turtle (*Emydoidea blandingii*). *Northeastern Naturalist* 30(3):N31-N34.
- Cannizzaro, J.S., IV, and R.M. Lafleur. 2023. Natural history notes: *Lithobates septentrionalis* (Mink Frog) and *Lithobates clamitans* (Green Frog). Interspecific amplexus. *Herpetological Review* 54(3):429-430.
- Cannizzaro, J.S., R. Lafleur, and D.J. Watermolen. 2021. Geographic distribution: *Necturus maculosus* (Mudpuppy). *SSAR Herpetological Review* 52(3):571. (Wood Co.)
- Cannizzaro, J.S., IV, and M. Schmanski. 2022. Geographic distribution: *Hemidactylium scutatum* (Four-toed Salamander). *Herpetological Review* 53(1):68. (Ozaukee Co.)
- Carlson, L. – see Bougie et al. 2024.
- Carlson, L.V. – see Badje et al. 2023, Badje et al. 2024, Bougie et al. 2023, and Staggs et al. 2024.
- Carlson, L.V., R. Wehse, R.A. Paloski, and R.A. Staffen. 2023. Geographic distribution: *Necturus maculosus* (Mudpuppy). *Herpetological Review* 54(4):590.
- Carper, D. – see Marsh et al. 2017.
- Cary, T.L., and W.H. Karasov. 2022. Larval exposure to polychlorinated biphenyl-126 led to a long-lasting decrease in immune function in postmetamorphic juvenile northern leopard frogs, *Lithobates pipiens*. *Environmental Toxicology* 41(1):81-94.
- Casper, G.S. – see Blais et al. 2021, Gafvert and Casper 2018, Geller et al. 2020a, Geller et al. 2020b, Geller and Casper 2019a, Geller and Casper 2019b, Geller and Casper 2022, Geller and Casper 2023, Hileman et al. 2017, and Rutherford and Casper 2018.
- Casper, G.S. 2016a. Wisconsin Herp Atlas. P. 7 In 2015 *Field Station Annual Report*. University of Wisconsin-Milwaukee, Milwaukee.

- Casper, G.S. 2016b. National Park Service Great Lakes Network amphibian monitoring program. P. 7 In *2015 Field Station Annual Report*. University of Wisconsin-Milwaukee, Milwaukee.
- Casper, G.S. 2016c. Wildlife ecopassage monitoring. P. 8 In *2015 Field Station Annual Report*. University of Wisconsin-Milwaukee, Milwaukee.
- Casper, G.S. 2016d. Enhancing ecological productivity of Milwaukee Estuary Area of Concern watersheds. P. 8 In *2015 Field Station Annual Report*. University of Wisconsin-Milwaukee, Milwaukee.
- Casper, G.S. 2016e. Wildlife population assessment for the Milwaukee Estuary Area of Concern. P. 9 In *2015 Field Station Annual Report*. University of Wisconsin-Milwaukee, Milwaukee.
- Casper, G.S. 2016f. Geographic distribution: *Necturus maculosus* (Mudpuppy). *Herpetological Review* 47(3):417. (Washington Co.)
- Casper, G.S. 2016g. Geographic distribution: *Hyla versicolor* (Gray Treefrog). *Herpetological Review* 47(3):419. (Milwaukee Co.)
- Casper, G.S. 2017a. Wisconsin Herp Atlas. P. 7 In *2016 Field Station Annual Report*. University of Wisconsin-Milwaukee, Milwaukee.
- Casper, G.S. 2017b. Wildlife ecopassage monitoring. P. 7 In *2016 Field Station Annual Report*. University of Wisconsin-Milwaukee, Milwaukee.
- Casper, G.S. 2017c. National Park Service Great Lakes Network amphibian monitoring program. P. 8 In *2016 Field Station Annual Report*. University of Wisconsin-Milwaukee, Milwaukee.
- Casper, G.S. 2018a. Wisconsin Herp Atlas. P. 7 In *2017 Field Station Annual Report*. University of Wisconsin-Milwaukee, Milwaukee.
- Casper, G.S. 2018b. Wildlife ecopassage monitoring. P. 7 In *2017 Field Station Annual Report*. University of Wisconsin-Milwaukee, Milwaukee.
- Casper, G.S. 2018c. National Park Service Great Lakes Network amphibian monitoring program. P. 8 In *2017 Field Station Annual Report*. University of Wisconsin-Milwaukee, Milwaukee.
- Casper, G.S. 2018d. Salamander survey at Riveredge Nature Center. P. 8 In *2017 Field Station Annual Report*. University of Wisconsin-Milwaukee, Milwaukee.
- Casper, G.S. 2018e. Wildlife population assessment for the Milwaukee Estuary Area of Concern. P. 8 In *2017 Field Station Annual Report*. University of Wisconsin-Milwaukee, Milwaukee.
- Casper, G.S. 2018f. Geographic distribution: *Lithobates catesbeianus* (American Bullfrog). *Herpetological Review* 49(2):282. (Shawano Co.)
- Casper, G.S. 2019a. Wildlife population assessment for the Milwaukee Estuary Area of Concern. P. 7 In *2018 Field Station Annual Report*. University of Wisconsin-Milwaukee, Milwaukee.
- Casper, G.S. 2019b. National Park Service Great Lakes Network amphibian monitoring program. P. 7 In *2018 Field Station Annual Report*. University of Wisconsin-Milwaukee, Milwaukee.
- Casper, G.S. 2019c. Wisconsin Herp Atlas. P. 8 In *2018 Field Station Annual Report*. University of Wisconsin-Milwaukee, Milwaukee.
- Casper, G.S. 2020a. Wildlife monitoring in southeastern Wisconsin. P. 7 In *2019 Field Station Annual Report*. University of Wisconsin-Milwaukee, Milwaukee.

- Casper, G.S. 2020b. National Park Service Great Lakes Network amphibian monitoring program. P. 8 In *2019 Field Station Annual Report*. University of Wisconsin-Milwaukee, Milwaukee.
- Casper, G.S. 2020c. Bioacoustic monitoring. P. 9 In *2019 Field Station Annual Report*. University of Wisconsin-Milwaukee, Milwaukee.
- Casper, G.S. 2021a. Bioacoustic monitoring. P. 10 In *2020 Field Station Annual Report*. University of Wisconsin-Milwaukee, Milwaukee.
- Casper, G.S. 2021b. National Park Service Great Lakes Network Amphibian Monitoring Program. P. 10 In *2020 Field Station Annual Report*. University of Wisconsin-Milwaukee, Milwaukee.
- Casper, G.S. 2021c. Wildlife monitoring in southeastern Wisconsin. P. 11 In *2020 Field Station Annual Report*. University of Wisconsin-Milwaukee, Milwaukee.
- Casper, G.S. 2022a. Geographic distribution: *Notophthalmus viridescens louisianensis* (Central Newt). *Herpetological Review* 53(4):626.
- Casper, G.S. 2022b. Bioacoustic monitoring. P. 13 In *2021 Field Station Annual Report*. University of Wisconsin-Milwaukee, Milwaukee.
- Casper, G.S. 2022c. National Park Service Great Lakes Network Amphibian Monitoring Program. P. 13 In *2021 Field Station Annual Report*. University of Wisconsin-Milwaukee, Milwaukee.
- Casper, G.S. 2022d. Wildlife monitoring in southeastern Wisconsin. P. 14 In *2021 Field Station Annual Report*. University of Wisconsin-Milwaukee, Milwaukee.
- Casper, G.S. 2022e. Bioacoustic monitoring at the Cedarburg Bog. P. 15 In *2021 Field Station Annual Report*. University of Wisconsin-Milwaukee, Milwaukee.
- Casper, G.S., T.G. Anton, and R.D. Rutherford. 2020a. *Field Guide to Amphibian Eggs and Larvae*. P. 9 In *2019 Field Station Annual Report*. University of Wisconsin-Milwaukee, Milwaukee.
- Casper, G.S., T.G. Anton, and R.D. Rutherford. 2020b. *Field Guide to Amphibian Eggs and Larvae of the Western Great Lakes*. Amphibian and Reptile Conservancy, Inc.
- Casper, G.S., T.G. Anton, and R.D. Rutherford. 2021. *Field Guide to Amphibian Eggs and Larvae*. P. 11 In *2020 Field Station Annual Report*. University of Wisconsin-Milwaukee, Milwaukee.
- Casper, G.S., T.G. Anton, and R.D. Rutherford. 2022. *Field Guide to Amphibian Eggs and Larvae*. P. 13 In *2021 Field Station Annual Report*. University of Wisconsin-Milwaukee, Milwaukee.
- Casper, G.S., E. Beever, U. Gafvert, and S.M. Nadeau. 2018. Amphibian monitoring protocol (version 2.0): Great Lakes Inventory and Monitoring Network. Natural Resource Report NPS/GLKN/NRR—2018/1761. National Park Service, Fort Collins, CO.
- Casper, G.S., and G.A. Geller. 2020. Sound production in turtles. P. 8 In *2019 Field Station Annual Report*. University of Wisconsin-Milwaukee, Milwaukee.
- Casper, G.S., and G.A. Geller. 2021. Sound production in turtles. P. 11 In *2020 Field Station Annual Report*. University of Wisconsin-Milwaukee, Milwaukee.
- Casper, G.S., and G.A. Geller. 2022. Sound production in turtles. P. 13 In *2021 Field Station Annual Report*. University of Wisconsin-Milwaukee, Milwaukee.
- Casper, G.S., and S. Graff. 2016. Wildlife monitoring in Ozaukee and Washington Counties, Wisconsin. P. 7 In *2015 Field Station Annual Report*. University of Wisconsin-Milwaukee, Milwaukee.
- Casper, G.S., and S. Graff. 2017. Wildlife monitoring in Ozaukee and Washington Counties, Wisconsin. P. 7 In *2016 Field Station Annual Report*. University of Wisconsin-Milwaukee, Milwaukee.

- Casper, G.S., and P. Kleinhenz. 2016. Geographic distribution: *Tropidoclonion lineatum* (Lined Snake). *Herpetological Review* 47(3):429. (Dane Co.)
- Casper, G.S., and S.M. Nadeau. 2019. Great Lakes Network amphibian monitoring: Initial synthesis report, 2013–2016. Natural Resource Report NPS/GLKN/NRR—2019/1955. National Park Service, Fort Collins, CO.
- Casper, G.S., and R.D. Rutherford. 2016. Geographic distribution: *Opheodrys vernalis* (Smooth Greensnake). *Herpetological Review* 47(3):428. (Menominee Co.)
- Casper, G.S., and R.D. Rutherford. 2018a. Geographic distribution: *Ambystoma maculatum* (Spotted Salamander). *Herpetological Review* 49(2):280. (Shawano Co.)
- Casper, G.S., and R.D. Rutherford. 2018b. Geographic distribution: *Hemidactylum scutatum* (Four-toed Salamander). *Herpetological Review* 49(2):280. (Shawano Co.)
- Casper, G.S., and R.D. Rutherford. 2018c. Geographic distribution: *Hyla versicolor* (Gray Treefrog). *Herpetological Review* 49(2):282. (Shawano Co.)
- Casper, G.S., and M. Schmidt. 2016. Geographic distribution: *Lithobates catesbeianus* (American Bullfrog). *Herpetological Review* 47(3):420. (Green Lake Co.)
- Casper, G.S., and K. Weber. 2018. Wildlife monitoring in Ozaukee and Washington Counties, Wisconsin. P. 7 *In* 2017 *Field Station Annual Report*. University of Wisconsin-Milwaukee, Milwaukee.
- Casper, G.S., and K. Weber. 2019. Wildlife monitoring in Ozaukee and Washington Counties, Wisconsin. P. 7 *In* 2018 *Field Station Annual Report*. University of Wisconsin-Milwaukee, Milwaukee.
- Cedar, K. – see Hileman et al. 2017.
- Chalkley-Hubbell, S. – see Theler et al. 2016.
- Charbonnier, J.F. – see Marsh et al. 2017.
- Chislock, M.F. – see Tozer et al. 2025.
- Christens, M. 2020. Readers write: Gasps for asps. *Wisconsin Natural Resources Magazine* 44(1):43. (The letter writer expresses a fear of snakes.)
- Christoffel, R.A. – see Hay and Christoffel 2022.
- Christoffel, R.A. 2022a Eastern musk turtle, *Sternotherus odoratus* (Latreille 1804). Pp. 830-839 *In* J.M. Kapfer and D.J. Brown (eds.). *Amphibians and Reptiles of Wisconsin*. University of Wisconsin Press, Madison.
- Christoffel, R.A. 2022b. Ring-necked snake, *Diadophis punctatus* (Linnaeus 1766). Pp. 533-545 *In* J.M. Kapfer and D.J. Brown (eds.). *Amphibians and Reptiles of Wisconsin*. University of Wisconsin Press, Madison.
- Ciborowski, J.J.H. – see Tozer et al. 2025.
- Clulow, S. – see Geller et al. 2022.
- Cochran, P.A., and S.J. Schmitt. 2016. Natural history notes. *Aspidoscelis sexlineata* (Six-lined Racerunner). Temporal habitat use. *Herpetological Review* 47(1):132-133.
- Cochrane, M.M. – see Lapin et al. 2019, Staggs et al. 2024, and Staggs et al. 2025.
- Collins, B.M., and A.F. Badje. 2016. Geographic distribution: *Lithobates septentrionalis* (Mink Frog). *Herpetological Review* 47(4):623. (Polk Co.)
- Collins, J.T. – see Powell et al. 2016, and Powell et al. 2019.
- Conant, R. – see Powell et al. 2016.
- Cooke, S. – see Bowne et al. 2018.
- Coppari, L. – see Di Nicola et al. 2022.
- Cooper, M.J. – see Tozer et al. 2025.

- Cordero, G.A., M.L. Balk, S.E. Pérez-González, L.M. Solberg, J.S. Doody, M.V. Plummer, and F.J. Janzen. 2024. Geographic variation in incubation temperatures promoting viable offspring production in broadly co-distributed turtles. *Journal of Experimental Zoology A: Ecology and Integrative Physiology* 341:509-524.
- Cosentino, B.J. – see Bowne et al. 2018, and Marsh et al. 2017.
- Credico, J. – see Standish et al. 2018a.
- Creedico, J. – see Standish et al. 2018b.
- Crocker, K. – see Walters et al. 2016.
- Cross, M. – see Jordan et al. 2024.
- Cross, M.D. – see Hileman et al. 2017.
- Crozier, G. – see Brown et al. 2025, and Spaid et al. 2025.
- Crumrine, P.W. – see Bowne et al. 2018.
- Czosnek, E. – see Pulkowski et al. 2020.
- Dadisman, J.D. – see Byers et al. 2017.
- Daleo, M. – see Ready et al. 2025.
- Dallas, J. – see Bowne et al. 2018.
- Dantas, A. – see Marsh et al. 2017.
- Davy, C.M. – see Jordan et al. 2024.
- Davy, C.M., L. Shirose, D. Campbell, R. Dillon, C. McKenzie, N. Nemeth, T. Braithwaite, H. Cai, T. Degazio, T. Dobbie, S. Egan, H. Fotherby, J.D Litzgus, P. Manorome, S. Marks, J.E Paterson, L. Sigler, D. Slavic, E. Slavik, J. Urquhart, and C. Jardine. 2021. Revisiting ophidiomycosis (snake fungal disease) after a decade of targeted research. *Frontiers in Veterinary Science* 8(665805):1-10.
- De Chambrier, A. – see Scholz et al. 2023.
- Degazio, T. – see Davy et al. 2021.
- DeGregorio, B.A. – see Hileman et al. 2017.
- DeMent, J. – see Walters et al. 2016.
- Demske, M. 2019. Readers write: Morning visitor. *Wisconsin Natural Resources Magazine* 43(4):29. (Includes a photograph of a fox snake.)
- Dertien, J.S., S. Self, B.E. Ross, K. Barrett, and R.F. Baldwin. 2020. The relationship between biodiversity and wetland cover varies across regions of the conterminous United States. *PLoS ONE* 15(5):e0232052.
- Dillon, R. – see Davy et al. 2021.
- Di Nicola, M.R., L. Coppari, T. Notomista, and D. Marini. 2022. *Ophidiomyces ophidiocola* detection and infection: a global review on a potential threat to the world's snake populations. *European Journal of Wildlife Research* 68:64. 29 pp.
- Dobbie, T. – see Davy et al. 2021.
- Dodd, C.K., Jr. 2013. A Bibliography of the Anurans of the United States and Canada (1734-2012). *Herpetological Conservation and Biology* 8(Monograph 4):1-203.
- Dodd, C.K., Jr. 2022. *Bibliography of the Anurans of the United States and Canada. Part 1: 1698-2012. Part 2: 2013-2021.* International Society for the History and Bibliography of Herpetology, Salt Lake City, UT.
- Dodd, C.K., Jr. 2024. Addenda & corrigenda: Bibliography of the anurans of the United States and Canada, Part 1: 1698-2012, Part 2: 2013-2021. *Wahlgreniana* 2:1-8.
- Dodd, C.K., Jr., and M.R. Jennings. 2021. How to raise a bullfrog – the literature on frog farming in North America. *Bibliotheca Herpetologica* 15(8):77-100.

- Donner, D.M. 2022. Eastern red-backed salamander, *Plethodon cinereus* (Green 1818). Pp. 355-368 In J.M. Kapfer and D.J. Brown (eds.). *Amphibians and Reptiles of Wisconsin*. University of Wisconsin Press, Madison.
- Donner, D.M., and D.J. Brown. 2022a. Snapping turtle, *Chelydra serpentina* (Linnaeus 1758). Pp. 722-737 In J.M. Kapfer and D.J. Brown (eds.). *Amphibians and Reptiles of Wisconsin*. University of Wisconsin Press, Madison.
- Donner, D.M., and D.J. Brown. 2022b. Spiny softshell, *Apalone spinifera* (LeSueur 1827). Pp. 850-860 In J.M. Kapfer and D.J. Brown (eds.). *Amphibians and Reptiles of Wisconsin*. University of Wisconsin Press, Madison.
- Doody, J.S. – see Cordero et al. 2024, and Geller et al. 2022.
- Doran, A. – see Bowne et al. 2018.
- Dosch, J.J. – see Bowne et al. 2018.
- Doss, G.A. – see Patson et al. 2022.
- Drayer, A.N. – see Lorch et al. 2021.
- Dreslik, M.J. – see Hileman et al. 2017.
- Druckenbrod, D.L. – see Bowne et al. 2018.
- Duffus, A.I.J. – see Brunner et al. 2021.
- Dukuly, S. – see Hughes et al. 2023.
- Duncan, R.P. – see Geller et al. 2022.
- Durtsche, R.D. – see Bowne et al. 2018.
- Dyke, A.I. – see Badje and Dyke 2018.
- Eagan, S. – see Davy et al. 2021.
- Eagles-Smith, C.A. – see Kain et al. 2025.
- Edling, T. – see Kiebler et al. 2020.
- Edwards, D.D., A. Steele, and N.M. Gordon. 2017. A comparison of helminth faunas of Cope's gray (*Hyla chrysoscelis*) and green (*Hyla cinerea*) treefrogs in areas of recent niche overlap. *Journal of Parasitology* 103(2):170-175. (The study used information from Wisconsin for comparative purposes.)
- Edwards, J.L. – see Lorch et al. 2016.
- Elgin, A.K. – see Spear et al. 2018.
- Elnaggar, A. – see Amin and Elnaggar 2022.
- Emery, C. – see Kain et al. 2025.
- Enge, K.M. New county records for Peter's rock agama (*Agama picticauda*) in Florida, Georgia, South Carolina, Texas, Virginia, and Wisconsin, USA. *Herpetological Review* 55(1):53-56. (Dane Co.)
- Engel, A.I. – see Sander et al. 2021.
- Engelhardt, J.W. – see Engelhardt and Engelhardt 2017.
- Engelhardt, R.L., and J.W. Engelhardt. 2017. Geographic distribution: *Notophthalmus viridescens* (Eastern Newt). *Herpetological Review* 48(3):582. (Rusk Co.)
- Erb, L. – see Jordan et al. 2024.
- Erickson, S. – see Standish et al. 2018.
- Etheridge, S. – see Walters et al. 2016.
- Ethier, D.M. – see Tozer et al. 2025.
- Ettinger, C.L. – see Ladner et al. 2022.

- Fago, A. – see Bundgaard et al. 2018.
- Farrell, T.M. – see Ladner et al. 2022, and Lorch et al. 2016.
- Faust, L.J. – see Hileman et al. 2017.
- Feagles, O., and G. Höbel. 2020a. Mate preferences and choosiness vary independently according to different causes of variation: a case study with eastern gray treefrogs (*Hyla versicolor*). Pp. 13 In 2019 Field Station Annual Report. University of Wisconsin-Milwaukee, Milwaukee.
- Feagles, O., and G. Höbel. 2020b. Fifty shades of grey in treefrogs: investigating multimodal signals in *Hyla versicolor*. P. 14 In 2019 Field Station Annual Report. University of Wisconsin-Milwaukee, Milwaukee.
- Feagles, O., and G. Höbel. 2021a. Mate preferences and choosiness vary independently in eastern gray treefrogs (*Hyla versicolor*). P. 14 In 2020 Field Station Annual Report. University of Wisconsin-Milwaukee, Milwaukee.
- Feagles, O., and G. Höbel. 2021b. Fifty shades of grey in treefrogs: Investigating multimodal signals in *Hyla versicolor*. P. 15 In 2020 Field Station Annual Report. University of Wisconsin-Milwaukee, Milwaukee.
- Feagles, O., and G. Höbel. 2022a. Mate preferences and choosiness vary independently in eastern gray treefrog (*Hyla versicolor*). P. 18 In 2021 Field Station Annual Report. University of Wisconsin-Milwaukee, Milwaukee.
- Feagles, O., and G. Höbel. 2022b. Choosiness and preferences covary with behavioral phenotypes unrelated to mate choice in gray treefrogs. P. 19 In 2021 Field Station Annual Report. University of Wisconsin-Milwaukee, Milwaukee.
- Feagles, O., and G. Höbel. 2024. Personality affects female mate choice: frogs displaying more consistent bold behaviors are choosier. *Behavioral Ecology* 35(1):arad101, <https://doi.org/10.1093/beheco/arad101>
- Feagles, O., G. Höbel, K. Stratman. 2022. Natural history notes: *Hyla versicolor* (Gray Treefrog) and *Anaxyrus americanus* (American Toad). Interspecific amplexus. *Herpetological Review* 53(1):105.
- Feagles, O., M. Reichert, and G. Höbel. 2019. Fifty shades of grey in treefrogs: Investigating multimodal signals in *Hyla versicolor*. Pp. 12-13 In 2018 Field Station Annual Report. University of Wisconsin-Milwaukee, Milwaukee.
- Fellows, S. – see Höbel and Fellows 2016.
- Fendrich, R.H. – see Bernstein et al. 2023.
- Fewless, G.A. – see Howe et al. 2016.
- Fiorino, G.E. – see Tozer et al. 2025.
- Fischer, E.K. – see Strobel et al. 2025.
- Fischer, S.L., L.L. Jaskiewicz, and C.N. Lapin. 2017. Natural history notes: *Glyptemys insculpta* (Wood Turtle). Female-female aggression at nest site. *Herpetological Review* 48(4):835.
- Fisher, R.N. – see Kain et al. 2025.
- Fitzpatrick, M.J., W.P. Porter, J.N. Pauli, M.R. Kearney, M. Notaro, and B. Zuckerberg. 2020. Future winters present a complex energetic landscape of decreased costs and reduced risk for a freeze-tolerant amphibian, the wood frog (*Lithobates sylvaticus*). *Global Change Biology* 26(11):6,350-6,362.
- Fitzpatrick, M.J., B. Zuckerberg, J.N. Pauli, M.R. Kearney, K.L. Thompson, L.C. Werner, II, and W.P. Porter. 2019. Modeling the distribution of niche space and risk for a freeze-tolerant ectotherm, *Lithobates sylvaticus*. *Ecosphere* 10(7):e02788.
- Fleming, J.E. – see Kain et al. 2025.
- Flory, J.A. – see Badje and Flory 2020.

- Forys, E.A. – see Marsh et al. 2017.
- Foster, M. – see Marsh et al. 2017.
- Foster, S. – see Hay and Foster 2022.
- Fotherby, H. – see Davy et al. 2021.
- Fountain, E.D. – see Byer et al. 2021.
- Fredericksen, T.S. – see Bowne et al. 2018.
- Freitas, M.B., C.T. Brown, and W.H. Karasov. 2017. Warmer temperature modifies effects of polybrominated diphenyl ethers on hormone profiles in leopard frog tadpoles (*Lithobates pipiens*). *Environmental Toxicology and Chemistry* 36(1):120-127.
- Fritz, D.J. 2017. Geographic distribution: *Hyla versicolor* (Gray Treefrog). *Herpetological Review* 48(3):584-585. (Waukesha Co.)
- Fugate, H.M., J.M. Kapfer, and R.W. McLaughlin. 2020. Analysis of the microbiota in the fecal material of painted turtles (*Chrysemys picta*). *Current Microbiology* 77:11-14.
- Gafvert, U. – see Casper et al. 2018.
- Gafvert, U., and G.S. Casper. 2018. Quality assurance plan for amphibian monitoring in the Great Lakes Network. Natural Resource Report NPS/GLKN/NRR—2018/1713. National Park Service, Fort Collins, CO.
- Gallant, A.L. – see Sadinski et al. 2018.
- Gallegos, E. – see Kain et al. 2025.
- Gamble, T. – see Wild and Gamble 2022.
- Gamble, T. 2022. Common five-lined skink, *Plestiodon fasciatus* (Linnaeus 1758). Pp. 410-422 In J.M. Kapfer and D.J. Brown (eds.). *Amphibians and Reptiles of Wisconsin*. University of Wisconsin Press, Madison.
- Garneau, D. – see Bowne et al. 2018.
- Garrett, N. – see Walters et al. 2016.
- Gaumnitz, L. (ed.). 2018. *Natural Heritage Conservation Program 2018 Field Notes*. PUB-NH-0900-2018. Wisconsin Department of Natural Resources, Madison. (Includes information on turtle tracking efforts, ephemeral pond protection efforts, and reconfirmation of a population of worm snakes.)
- Gaumnitz, L. (ed.). 2019. *Natural Heritage Conservation Program 2019 Field Notes*. PUB-NH-0900-2019. Wisconsin Department of Natural Resources, Madison. (Includes information on wood turtle nest protection, new records of plains garter snakes, and massasauga monitoring efforts).
- Gaumnitz, L. (ed.). 2020. *Natural Heritage Conservation Program 2020 Field Notes*. PUB-NH-0900-2020. Wisconsin Department of Natural Resources, Madison. (Includes information on wood turtle research and turtle road crossings.)
- Geary, M.G. – see White et al. 2020a, and White et al. 2020b.
- Gehara, M. – see Burbrink et al. 2022.
- Gehring, T.M. – see Tozer et al. 2025.
- Geller, G.A. – see Casper and Geller 2020, Casper and Geller 2021, Casper and Geller 2022, and Vraniak and Geller 2017.
- Geller, G.A. 2020a. Natural history notes. *Graptemys ouachitensis* (Ouachita Map Turtle). Predation. *Herpetological Review* 51(2):314-315.
- Geller, G.A. 2020b. Natural history notes. *Graptemys ouachitensis* (Ouachita Map Turtle). Nest predation. *Herpetological Review* 51(4):830.

- Geller, G.A. 2022a. Notes on flesh fly (Diptera: Sarcophagidae) presence at Ouachita map turtle (*Graptemys ouachitensis* Cagle, 1953) nests along the Lower Wisconsin River, USA. *Herpetology Notes* 15:27-32.
- Geller, G.A. 2022b. Natural history notes. *Graptemys ouachitensis* (Ouachita Map Turtle). Hatchling emergence. *Herpetological Review* 53(3):487-488.
- Geller, G.A., and G.S. Casper. 2019a. Natural history notes. *Chelydra serpentina* (Snapping Turtle). Hatchling sounds. *Herpetological Review* 50(4):768-9.
- Geller, G.A., and G.S. Casper. 2019b. Late-term embryos and hatchlings of Ouachita map turtles (*Graptemys ouachitensis*) make sounds within the nest. *Herpetological Review* 50(3):449-452.
- Geller, G.A., and G.S. Casper. 2022. Geographic distribution: *Notophthalmus viridescens louisianensis* (Central Newt). *Herpetological Review* 53(4):626. (Adams Co.)
- Geller, G.A., and G.S. Casper. 2023. Sound production by late-term embryos and hatchlings of the spiny softshell turtle, *Apalone spinifera* (LeSueur, 1827), before nest exit. *Herpetology Notes* 16:483-491.
- Geller, G.A., G.S. Casper, and B.J. Halstead. 2020a. Hatchling emergence ecology of Ouachita map turtles (*Graptemys ouachitensis*) on the Lower Wisconsin River, Wisconsin. *Chelonian Conservation and Biology* 19(2):217-235.
- Geller, G.A., G.S. Casper, and B.J. Halstead. 2020b. Dispersal of hatchling Ouachita map turtles (*Graptemys ouachitensis*) from natural nests on the Lower Wisconsin River, Wisconsin. *Chelonian Conservation and Biology* 19(2):236-245.
- Geller, G.A., J.S. Doody, S. Clulow, and R.P. Duncan. 2022. Do freshwater turtles use rainfall to increase nest success? *Frontiers in Ecology and Evolution* 10:852175.
- Geller, G.A., M.J. Pappas, and R.C. Vogt. 2020. Natural history notes: *Graptemys ouachitensis* (Ouachita Map Turtle). Clutch size. *Herpetological Review* 51(2):314.
- Geller, G.A., and S.L. Parker. 2022. What are the primary cues used by mammalian predators to locate freshwater turtle nests? A critical review of the evidence. *Frontiers in Ecology and Evolution* 9:784786.
- General, J. – see Marsh et al. 2017.
- Genet, K.S. – see Bowne et al. 2018, and Marsh et al. 2017.
- Gentry, S. 2023. Wildlife disease from a fungal perspective: A look into host specificity and physiology of *Ophidiomyces ophidiicola* and *Nannizziopsis guarroi*. Ph.D. dissertation. University of Wisconsin-Madison.
- Gentry, S., J.M. Lorch, J.S. Lankton, and A. Pringle. 2023. A cross-inoculation experiment reveals that *Ophidiomyces ophidiicola* and *Nannizziopsis guarroi* can each infect both snakes and lizards. *Applied and Experimental Microbiology* 89(5):e0216822.
- Gibbons, W. – see Meshaka et al. 2017, and Wilson et al. 2024.
- Gibbons, W. 2017. *Snakes of the Eastern United States*. University of Georgia Press, Athens, GA. 416 p.
- Gibbs, J.P. – see Buckardt et al. 2020.
- Ginsberg, H.S., E.L. Rulison, J.L. Miller, G. Pang, I.M. Arsnoe, G.J. Hickling, N.H. Ogden, R.A. LeBrun, and J.I. Tsao. 2020. Local abundance of *Ixodes scapularis* in forests: Effects of environmental moisture, vegetation characteristics, and host abundance. *Ticks and Tick-borne Diseases* 11:101271.
- Gleason, S.M., J.M. Yahn, and W.H. Karasov. 2016. Digestive efficiency of northern leopard frog (*Lithobates pipiens*) tadpoles during development, reared on a laboratory diet. *Herpetologica* 72(2):107-113.
- Glorioso, B.M. – see Ladner et al. 2022, and Lorch et al. 2016.

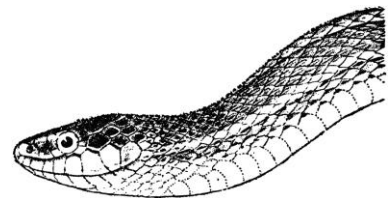
- Glowacki, G. – see Kastle et al. 2021, and Ready et al. 2025.
- Glowacki, G.A. – see Buckardt et al. 2020, King et al. 2021, Urbanek et al. 2016, and Winter et al. 2020.
- Gnass Giese, E.E. – see Tozer et al. 2025.
- Golba, C.K. – see King et al. 2021.
- Goldberg, S.R. 2025. Notes on reproduction of the mink frog, *Aquarana septentrionalis* (Anura: Ranidae). *Bulletin of the Chicago Herpetological Society* 60(10):141-143.
- Gordon, N.M. – see Edwards et al. 2017.
- Gorzo, J.M. – see Hamilton et al. 2018.
- Grabas, G.P. – see Tozer et al. 2025.
- Graff, S. – see Casper and Graff 2016, and Casper and Graff 2017.
- Graham, S.P. 2018. *American Snakes*. Johns Hopkins University Press, Baltimore, MD.
- Grant, E.H.C. – see Kain et al. 2025.
- Graser, W. – see Kastle et al. 2021, Ready et al. 2025, and Sander et al. 2021.
- Grasser, W.H., III – see Cannizzaro et al. 2023.
- Gray, M.J. – see Brunner et al. 2021.
- Grear, D.A. – see Kain et al. 2025, and Ladner et al. 2022.
- Greuel, A. – see Stevenson et al. 2017.
- Grey, E.K. – see Spear et al. 2018.
- Grover, N.A. – see Li et al. 2023.
- Guinto, D.J. – see Jordan et al. 2024.
- Gurfield, N. – see Kiebler et al. 2020.
- Guttery, M.R. – see Byers et al. 2017.
- Halstead, B.J. – see Geller et al. 2020a, Geller et al. 2020b, and Kain et al. 2025.
- Hamernick, M.G. – see Paisley et al. 2024.
- Hamilton, C.M., B.L. Bateman, J.M. Gorzo, B. Reid, W.E. Thogmartin, M.Z. Peery, P.J. Heglund, V.C. Radeloff, and A.M. Pidgeon. 2018. Slow and steady wins the race? Future climate and land use change leaves the imperiled Blanding's turtle (*Emydoidea blandingii*) behind. *Biological Conservation* 222:75-85.
- Hanneken, M. – see Marsh et al. 2017.
- Harding, J.H., and D. Misfud. 2017. *Amphibians and Reptiles of the Great Lakes Region*. University of Michigan Press, Ann Arbor, MI.
- Harrington, S., I. Overcast, E.A. Myers, and F.T. Burbrink. 2024. Pleistocene glaciation drove shared population coexpansion in eastern North American snakes. *Molecular Ecology* 34(11):e17625.
- Harris, L. 2017. Readers write: Bluffing bullsnake. *Wisconsin Natural Resources Magazine* 41(4):29.
- Harrison, A.M. – see Tozer et al. 2025.
- Harrison, B.C. – see King et al. 2022.
- Harrison, B., and C. Steinle. 2020. An albino Butler's gartersnake (*Thamnophis butleri*) from Milwaukee County, Wisconsin. *Reptiles & Amphibians* 27(3):451.
- Harrison, C. – see Walters et al. 2016.
- Harvey, D.S. – see Hileman et al. 2017.
- Hay, R.W. – see Hileman et al. 2017, King et al. 2022, Paisley and Hay 2022, and Sajdak et al. 2022.

- Hay, R.W., and R.A. Christoffel. 2022. Ornate box turtle, *Terrapene ornata* (Agassiz 1857). Pp. 814-829 In J.M. Kapfer and D.J. Brown (eds.). *Amphibians and Reptiles of Wisconsin*. University of Wisconsin Press, Madison.
- Hay, R.W., and S. Foster. 2022. Blanding's turtle, *Emydoidea blandingii* (Holbrook 1838). Pp. 751-767 In J.M. Kapfer and D.J. Brown (eds.). *Amphibians and Reptiles of Wisconsin*. University of Wisconsin Press, Madison.
- Hay, R.W., and J.M. Kapfer. 2022 Eastern foxsnake, *Pantherophis vulpinus* (Baird and Girard 1853). Pp. 495-510 In J.M. Kapfer and D.J. Brown (eds.). *Amphibians and Reptiles of Wisconsin*. University of Wisconsin Press, Madison.
- Haynes, E. – see Allender et al. 2020.
- Hayward, L. – see Höbel and Hayward 2018.
- Healan, C. – see Walters et al. 2016.
- Heesacker, A. 2017. The influence of ambient light levels and use of visual cues during treefrog phonotaxis. P. 15 In 2016 *Field Station Annual Report*. University of Wisconsin-Milwaukee, Milwaukee.
- Heglund, P.J. – see Hamilton et al. 2018.
- Hennes, M., M. Nowak, and A.L. Brandt. 2018. Biodiversity and conservation study of Chambers Island, Wisconsin - 2017 annual report. *Student Creative and Scholarly Works 2*. https://digitalcommons.snc.edu/student_works/2.
- Hereema, M. – see White et al. 2020a, and White et al. 2020b.
- Hess, K.R. – see Marsh et al. 2017.
- Hickling, G.J. – see Ginsberg et al. 2020.
- Hileman, E.T. – see Beard et al. 2024, King et al. 2022, and Paloski et al. 2017.
- Hileman, E.T., and D.R. Bradke. 2022. Butler's gartersnake, *Thamnophis butleri* (Cope 1889). Pp. 610-624 In J.M. Kapfer and D.J. Brown (eds.). *Amphibians and Reptiles of Wisconsin*. University of Wisconsin Press, Madison.
- Hileman, E.T., R.B. King, J.M. Adamski, T.G. Anton, R.L. Bailey, S.J. Baker, N.D. Bieser, T.A. Bell, Jr., K.M. Bissell, D.R. Bradke, H. Campa, III, G.S. Casper, K. Cedar, M.D. Cross, B.A. DeGregorio, M.J. Dreslik, L.J. Faust, D.S. Harvey, R.W. Hay, B.C. Jellen, B.D. Johnson, G. Johnson, B.D. Kiel, B.A. Kingsbury, M.J. Kowalski, Y.M. Lee, A.M. Lentini, J.C. Marshall, D. Mauger, J.A. Moore, R.A. Paloski, C.A. Phillips, P.D. Pratt, T. Preney, K.A. Prior, A. Promaine, M. Redmer, H.K. Reinert, J.D. Rouse, K.T. Shoemaker, S. Sutton, T.J. VanDeWalle, P.J. Weatherhead, D. Wynn, and A. Yagi. 2017. Climatic and geographic predictors of life history variation in eastern massasauga (*Sistrurus catenatus*): A range-wide synthesis. *PLoS ONE* 12(2):e0172011.
- Hill, M.G. 2022. A late Pleistocene wood turtle (*Glyptemys insculpta*) from Iowa, USA: Response of the taxon to glaciation and formation of the current range. *Canadian Field-Naturalist* 136(3):206-212.
- Hill, S.A. – see Marsh et al. 2017.
- Höbel, G. – see Cannizzaro and Höbel 2023, Feagles et al. 2019, Feagles et al. 2022, Feagles and Höbel 2020a, Feagles and Höbel 2020b, Feagles and Höbel 2021a, Feagles and Höbel 2021b, Feagles and Höbel 2022a, Feagles and Höbel 2022b, Feagles and Höbel 2024, Klinkhardt and Höbel 2019, Nelson and Höbel 2017, Orjuela and Höbel 2017, Pulkowski et al. 2020, Reichert and Höbel 2017a, Reichert and Höbel 2017b, Robertson et al. 2017, Ruder and Höbel 2018, Ruder and Höbel 2019, Stratman et al. 2021, Stratman et al. 2021, Stratman et al. 2022, Stratman and Höbel 2018, Stratman and Höbel 2019a, Stratman and Höbel 2019b, Stratman and Höbel 2020, Underhill and Höbel 2017a, Underhill and Höbel 2017b, Underhill and Höbel 2017c, Underhill and Höbel 2018a, Underhill and Höbel 2018b, and Underhill and Höbel 2018c.

- Höbel, G. 2016a. Multimodal communication in eastern gray treefrogs, *Hyla versicolor*. P. 14 In 2015 Field Station Annual Report. University of Wisconsin-Milwaukee, Milwaukee.
- Höbel, G. 2016b. Behavioral ecology of color change in gray treefrogs. P. 15 In 2015 Field Station Annual Report. University of Wisconsin-Milwaukee, Milwaukee.
- Höbel, G. 2016c. Handedness and behavioral lateralization in anurans. P. 16 In 2015 Field Station Annual Report. University of Wisconsin-Milwaukee, Milwaukee.
- Höbel, G. 2017. Soundscape ecology of Wisconsin ecosystems: underwater sounds. P. 18 In 2016 Field Station Annual Report. University of Wisconsin-Milwaukee, Milwaukee.
- Höbel, G. 2018. Midwest Conservation Dogs training. P. 16 In 2017 Field Station Annual Report. University of Wisconsin-Milwaukee, Milwaukee.
- Höbel, G. 2019. Salamander cover board survey. P. 15 In 2018 Field Station Annual Report. University of Wisconsin-Milwaukee, Milwaukee.
- Höbel, G. 2020. Do signal types not intended for mate attraction influence mate choice decisions? P. 17 In 2019 Field Station Annual Report. University of Wisconsin-Milwaukee, Milwaukee.
- Höbel, G., and S. Fellows. 2016. Vocal repertoire and calling activity of a dwarf clawed frog (*Hymenochirus boettgeri*). *Herpetological Review* 47(4):543-549. (Study used specimens acquired from a Milwaukee pet store.)
- Höbel, G., and L. Hayward. 2018. Chorusing behavior in eastern gray treefrogs. P. 15 In 2017 Field Station Annual Report. University of Wisconsin-Milwaukee, Milwaukee.
- Höbel, G., and E. Ruder. 2018. Salamander cover board survey. P. 16 In 2017 Field Station Annual Report. University of Wisconsin-Milwaukee, Milwaukee.
- Höbel, G., and L. Symes. 2016. Audiovisual integration and leader preferences. P. 15 In 2015 Field Station Annual Report. University of Wisconsin-Milwaukee, Milwaukee.
- Hodge, M. 2019. Readers write: One big gulp. *Wisconsin Natural Resources Magazine* 43(4):29. (Includes a photograph of a eastern garter snake feeding on an American toad.)
- Hoekstra, L. – see Reinke et al. 2020.
- Holmquist, H.M. – see Macedo and Holmquist 2022.
- Hooper, E.D., Jr. – see Powell et al. 2019.
- Hooper, Jr. Hossack, B.R. – see Kain et al. 2025.
- Howe, R.W. – see Tozer et al. 2025.
- Howe, R.W., A.T. Wolf, and G.A. Fewless. 2016. Biota of Wisconsin's Niagara Escarpment. *Geoscience Wisconsin* 22(3):1-10.
- Hughes, D.F. – see Meshaka et al. 2017.
- Hughes, D.F., M.C. Allender, N.P. Bernstein, J.B. Iverson, C. Kolthoff, B.T. Martin, W.E. Meshaka, Jr., and B.M. Reed. 2024. *Terrapene ornata* (Agassiz 1857) – Ornate box turtle, plains box turtle, western box turtle, desert box turtle, Tortuga de Caja Ornamentada. In A.G.J. Rhodin, J.B. Iverson, P.P. van Dijk, C.B. Stanford, E.V. Goode, K.A. Buhlmann, and R.A. Mittermeier (eds.). Conservation Biology of Freshwater Turtles and Tortoises: A Compilation Project of the IUCN/SSC Tortoise and Freshwater Turtle Specialist Group. *Chelonian Research Monographs* 5(18):126.1–124.40.
- Hughes, D.F., S. Dukuly, D.F. Becker, J. Scharosch, J.G. Otten, S. Wagner, and B.M. Reed. 2023. Copulation phenology of ornate box turtles (*Terrapene ornata*). *Journal of Herpetology* 57(2):246-253.
- Huijser, M.P., and M.A. Bell. 2025. Wildlife crossing hotspot analyses for major highways in Wisconsin, USA. Report 4WB112-A for Wisconsin Department of Transportation. Western Transportation Institute, Montana State University, Bozeman, MT.

- Hunter, K.C., P.A. Lawson, S.E. Dowd., and R.W. McLaughlin. 2021. *Clostridium chrysemydis* sp. nov. isolated from the faecal material of a painted turtle. *International Journal of Systematic and Evolutionary Microbiology* 71(9):005023. 7 pp.
- Ibach, A. – see Kastle et al. 2021.
- Ip, H.S., J.M. Lorch, and D.S. Blehert. 2016. Detection of spring viraemia of carp virus in imported amphibians reveals an unanticipated foreign animal disease threat. *Emerging Microbes & Infections* 5:e97. (Although the subject of the reported investigation is an imported newt, the paper has relevance for disease transmission in Wisconsin.)
- Iqbal, F. – see Marsh et al. 2017.
- Isidoro-Ayza, M., J.M. Lorch, A.E. Ballmann, and N.K. Businga. 2019. Mass mortality of green frog (*Rana clamitans*) tadpoles in Wisconsin, USA, associated with severe infection with pathogenic Perkinsea clade. *Journal of Wildlife Diseases* 55(1):262-265.
- Iverson, J.B. – see Hughes et al. 2024, Meshaka et al. 2017, and Vogt et al. 2018.
- Jackson, D.C. – see Warren and Jackson 2017.
- Jackson, S.D. – see Jones et al. 2024.
- Jadin, R.C. – see O’Leathlobhair and Jadin 2023.
- Jadin, R.C., and S.A. Orlofske. 2020. Natural history notes: *Pantherophis vulpinus* (Eastern Foxsnake). Diet. *Herpetological Review* 51(1):152.
- Jaeger, C.P., and J.M. Kapfer. 2022. Plains gartersnake, *Thamnophis radix* (Baird and Girard 1853). Pp. 625-632 In J.M. Kapfer and D.J. Brown (eds.). *Amphibians and Reptiles of Wisconsin*. University of Wisconsin Press, Madison.
- Jaimes, G. – see Maki et al. 2023.
- Jaimes, G., E. Maki, and B.A. Reinke. 2025. Assessing the impact of environment on the color of painted turtles (*Chrysemys picta*) in the wild. *Ecology and Evolution* 15:e71702.
- James, A.M. – see Bundgaard et al. 2018.
- Janzen, F.J. – see Cordero et al. 2024, Jordan et al. 2019, and Reinke et al. 2020.
- Jardin, C. – see Davy et al. 2021.
- Jaskiewicz, L.L. – see Fischer et al. 2017.
- Jellen, B.C. – see Hileman et al. 2017.
- Jennings, M.R. – see Dodd and Jennings 2021.
- Jensen, G. – see Badje et al. 2020, and Watson et al. 2020.
- Jensen, J.B. 2020. Geographic distribution: *Ambystoma tigrinum* (Eastern Tiger Salamander). *Herpetological Review* 51(4):767. (Bayfield Co.)
- Johnson, B.D. – see Hileman et al. 2017.
- Johnson, G. – see Hileman et al. 2017, and Jordan et al. 2024.
- Jones, K.S. – see Marsh et al. 2017.
- Jones, M. – see Jordan et al. 2024.
- Jones, M.T. – see Beard et al. 2023, and Beard et al. 2024.
- Jones, M.T., and L.L. Willey. (eds.). 2021. *Biology and Conservation of the Wood Turtle*. Northeast Association of Fish and Wildlife Agencies, Inc., Petersburg, NY.
- Jones, M.T., L.L. Willey, and S.D. Jackson. 2024. Biology and conservation of emydine turtles: Introduction. *Northeastern Naturalist* 31(Special Issue12):iii–xxxvii.
- Jones, P.M. – see Sadinski et al. 2018.
- Jordan, M.A., V. Mumaw, N. Millspaw, S.W. Mockford, and F.J. Janzen. 2019. Range-wide phylogeography of Blanding’s turtle [*Emys* (= *Emydoidea*) *blandingii*]. *Conservation Genetics* 20(3):419-430.

- Jordan, M.A., B.N. Reid, D.J. Guinto, W.J.B. Anthonysamy, C.M. Davy, J. Rhymer, M. Marchand, M. Cross, G. Lipps, Jr., Y.M. Lee, B. Kingsbury, L. Willey, M. Jones, J. Mays, G. Johnson, and L. Erb. 2024. Patterns of contemporary genetic variation and effective population size in Blanding's turtle populations. *Northeastern Naturalist* 31(Special Issue12):E131–E150.
- Joseph, L.A. – see Walters et al. 2016.
- Joyce, W. – see Bundgaard et al. 2018.
- Judziewicz, E.J., and E.R. Wild. 2022. Amphibians and reptiles in Wisconsin plant communities: Terrestrial plant communities. Pp. 49-60 In J.M. Kapfer and D.J. Brown (eds.). *Amphibians and Reptiles of Wisconsin*. University of Wisconsin Press, Madison.
- Kaarakka, H.M. – see White et al. 2020a, and White et al. 2020b.
- Kahler, K.A. – see Tall and Kahler 2019.
- Kain, M.P., B.R. Hossack, K.L. Smalling, B.J. Halstead, D.A. Grear, D.A.W. Miller, M.J. Adams, A.R. Backlin, W.J. Barichivich, C.A. Eagles-Smith, C. Emery, J.E. Fleming, R.N. Fisher, E. Gallegos, D.J. Lor, P.M. Kleeman, E. Muths, T. Pan, C.A. Pearl, C.W. Robinson, C. Rumrill, B.J. Tornabene, J.H. Waddle, S.C. Walls, and E.H.C. Grant. 2025. Independent and interactive effects of disease and methylmercury on demographic rates across multiple amphibian populations. *Scientific Reports* 15(1):1,7314.
- Kapfer, J. – see Katovich and Kapfer 2023, and Kastle et al. 2021.
- Kapfer, J.M. – see Anderson and Kapfer 2022, Badje et al. 2016, Badje et al. 2021, Fugate et al. 2020, Hay and Kapfer 2022, Jaeger and Kapfer 2022, Lafleur and Kapfer 2022, Lorch et al. 2016, Paloski et al. 2017, Paloski et al. 2020, Sander et al. 2021, and Vogt and Kapfer 2016.
- Kapfer, J.M. 2022a. Some prominent figures in Wisconsin herpetology. Pp. 11-25 In J.M. Kapfer and D.J. Brown (eds.). *Amphibians and Reptiles of Wisconsin*. University of Wisconsin Press, Madison.
- Kapfer, J.M. 2022b. Introduction to conservation and management of Wisconsin's amphibians and reptiles. Pp. 65-120 In J.M. Kapfer and D.J. Brown (eds.). *Amphibians and Reptiles of Wisconsin*. University of Wisconsin Press, Madison.
- Kapfer, J.M. 2022c. Painted turtle, *Chrysemys picta* (Schneider 1783). Pp. 738-750 In J.M. Kapfer and D.J. Brown (eds.). *Amphibians and Reptiles of Wisconsin*. University of Wisconsin Press, Madison.
- Kapfer, J.M. 2022d. Eastern milksnake, *Lampropeltis triangulum* (Lacépède 1789). Pp. 459-470 In J.M. Kapfer and D.J. Brown (eds.). *Amphibians and Reptiles of Wisconsin*. University of Wisconsin Press, Madison.



Drawing from Charles C. Abbott's *Cyclopedia of Natural History* (New York: A. L. Burt, 1888) via ClipArt ETC.

- Kapfer, J.M. 2022e. Gophersnake, *Pituophis catenifer* (Blainville 1835). Pp. 511-525 In J.M. Kapfer and D.J. Brown (eds.). *Amphibians and Reptiles of Wisconsin*. University of Wisconsin Press, Madison.
- Kapfer, J.M. 2022f. Hypothetical and enigmatic species of Wisconsin. Pp. 861-881 In J.M. Kapfer and D.J. Brown (eds.). *Amphibians and Reptiles of Wisconsin*. University of Wisconsin Press, Madison.
- Kapfer, J.M., and D.J. Brown (eds.). 2022. *Amphibians and Reptiles of Wisconsin*. University of Wisconsin Press, Madison.
- Kapfer, J.M., and D.J. Brown. 2022a. Introduction. Pp. 3-6 In J.M. Kapfer and D.J. Brown (eds.). *Amphibians and Reptiles of Wisconsin*. University of Wisconsin Press, Madison.
- Kapfer, J.M., and D.J. Brown. 2022b. Introduction to species accounts. Pp. 140-146 In J.M. Kapfer and D.J. Brown (eds.). *Amphibians and Reptiles of Wisconsin*. University of Wisconsin Press, Madison.
- Kapfer, J.M., and D.J. Brown. 2022c. Six-lined racerunner, *Aspidoscelis sexlineata* (Linnaeus 1766). Pp. 433-443 In J.M. Kapfer and D.J. Brown (eds.). *Amphibians and Reptiles of Wisconsin*. University of Wisconsin Press, Madison.
- Kapfer, J.M., and J.M. Lorch. 2022. North American racer, *Coluber constrictor* (Linnaeus 1758). Pp. 444-458 In J.M. Kapfer and D.J. Brown (eds.). *Amphibians and Reptiles of Wisconsin*. University of Wisconsin Press, Madison.
- Kapfer, J.M., and T. Muehlfield. 2016a. Use of mark-recapture techniques to estimate turtle populations on the UWM Field Station. P. 18 In *2015 Field Station Annual Report*. University of Wisconsin-Milwaukee, Milwaukee.
- Kapfer, J.M., and T. Muehlfield. 2016b. Use of mark-recapture techniques to estimate milk snake (*Lampropeltis triangulum*) populations in the Upper Midwest. P. 18 In *2015 Field Station Annual Report*. University of Wisconsin-Milwaukee, Milwaukee.
- Kapfer, J.M., and T. Muehlfield. 2017a. Use of mark-recapture techniques to estimate turtle populations on the UW-Milwaukee Field Station grounds. P. 21 In *2016 Field Station Annual Report*. University of Wisconsin-Milwaukee, Milwaukee.
- Kapfer, J.M., and T. Muehlfield. 2017b. Use of mark-recapture techniques to estimate milk snake (*Lampropeltis triangulum*) populations in the Upper Midwest. P. 21 In *2016 Field Station Annual Report*. University of Wisconsin-Milwaukee, Milwaukee.
- Kapfer, J.M., and T. Muehlfield. 2018a. Use of mark-recapture techniques to estimate milk snake (*Lampropeltis triangulum*) populations on the Upper Midwest. Pp. 17-18 In *2017 Field Station Annual Report*. University of Wisconsin-Milwaukee, Milwaukee.
- Kapfer, J.M., and T. Muehlfield. 2018b. Use of mark-recapture techniques to estimate turtle populations on the UW-Milwaukee Field Station grounds. P. 18 In *2017 Field Station Annual Report*. University of Wisconsin-Milwaukee, Milwaukee.
- Kapfer, J.M., and P.C. Owen. 2022. Blue-spotted salamander, *Ambystoma laterale* (Hallowell 1856). Pp. 306-317 In J.M. Kapfer and D.J. Brown (eds.). *Amphibians and Reptiles of Wisconsin*. University of Wisconsin Press, Madison.
- Kapfer, J.M., G.W. Schuurman, and R.A. Paloski. 2022. Common gartersnake, *Thamnophis sirtalis* (Linnaeus 17588). Pp. 652-665 In J.M. Kapfer and D.J. Brown (eds.). *Amphibians and Reptiles of Wisconsin*. University of Wisconsin Press, Madison.
- Kapfer, J.M., and P.M. Skawinski. 2022. Amphibians and reptiles in Wisconsin plant communities: Aquatic plant communities. Pp. 60-64 In J.M. Kapfer and D.J. Brown (eds.). *Amphibians and Reptiles of Wisconsin*. University of Wisconsin Press, Madison.

- Kapfer, J.M., and R.A. Staffen. 2022. Queensnake, *Regina septemvittata* (Say 1825). Pp. 574-586 In J.M. Kapfer and D.J. Brown (eds.). *Amphibians and Reptiles of Wisconsin*. University of Wisconsin Press, Madison.
- Karafa, J. – see Ray et al. 2024.
- Karasov, W.H. – see Brown et al. 2021, Cary and Karasov 2022, Freitas et al. 2017, Gleason et al. 2016, and Yahn and Karasov 2021.
- Karow, J. – see Badje et al. 2020, and Watson et al. 2020.
- Karraker, N.E. – see Marsh et al. 2017.
- Kastle, M., J. Kapfer, A.R. Kuhns, W. Graser, G. Glowacki, A. Ibach, L. Mitchem, J. Mozuch, N. Rudolph, K. Rutzen, R. King. 2021. Blanding’s turtle hatchling survival and movements following natural vs. artificial incubation. *Journal of Herpetology* 55(2):167-173.
- Katovich, K.R., and J.M. Kapfer. 2023. Natural History notes: *Terrapene ornata* (Ornate Box Turtle). *Diet. Herpetological Review* 54(1):121-122.
- Kearney, M.R. – see Fitzpatrick et al. 2019, Fitzpatrick et al. 2020, and Gleason et al. 2016.
- Keenan, S.W., and M. Tellez. 2016. Natural history notes: *Trachemys scripta elegans* (Red-eared Slider) and *Chrysemys picta belli* (Western Painted Turtle). *Endoparasites. Herpetological Review* 47(3):451-453. (Study used *Chrysemys picta* and *Trachemys scripta* specimens provided by a Wisconsin supplier.)
- Kerby, J. – see Standish et al. 2018.
- Kessler, G.P., and A.F. Badje. 2017. Geographic distribution: *Lithobates catesbeianus* (American Bullfrog). *Herpetological Review* 48(4):807-808. (Douglas Co.)
- Keyler, D.E. 2022. Snakebite envenomation in Wisconsin and the northern Upper Mississippi River Valley. Pp. 714-720 In J.M. Kapfer and D.J. Brown (eds.). *Amphibians and Reptiles of Wisconsin*. University of Wisconsin Press, Madison.
- Keyler, D.E. 2023. Timber rattlesnake (*Crotalus horridus*): Biology, conservation, and envenomation in the Upper Mississippi River Valley (1982-2020). *Toxicon X* 19:100167. doi: 10.1016/j.toxcx.2023.100167.
- Kiebler, C.A., L. Bottichio, L. Simmons, C. Basler, R. Klos, N. Gurfield, E. Roberts, A. Kimura, L.S. Lewis, K. Bird, F. Stiles, L.K. Schlater, K. Lantz, T. Edling, and C.B. Behravesh. 2020. Outbreak of human infections with uncommon *Salmonella* serotypes linked to pet bearded dragons, 2012-2014. *Zoonoses Public Health* 67:425-434. (Although focused on an exotic species, paper is relevant to the captive husbandry of native Wisconsin reptiles.)
- Kiel, B.D. – see Hileman et al. 2017.
- Kilpatrick, E.S. – see Marsh et al. 2017.
- Kimura, A. – see Kiebler et al. 2020, and Walters et al. 2016.
- King, R. – see Kastle et al. 2021, and Sander et al. 2021.
- King, R.B. – see Hileman et al. 2017, and McKeag and King 2022.
- King, R.B. 2022. Dekay’s brownsnake, *Storeria dekayi* (Holbrook 1836). Pp. 587-599 In J.M. Kapfer and D.J. Brown (eds.). *Amphibians and Reptiles of Wisconsin*. University of Wisconsin Press, Madison.
- King, R.B., C.K. Golba, G.A. Glowacki, and A.R. Kuhns. 2021. Blanding’s turtle demography and population viability. *Journal of Fish and Wildlife Management* 12(1):112-138.
- King, R.B., R.W. Hay, B.C. Harrison, E.T. Hileman, and C.S. Berg. 2022. Massasauga, *Sistrurus catenatus* (Rafinesque 1818). Pp. 695-713 In J.M. Kapfer and D.J. Brown (eds.). *Amphibians and Reptiles of Wisconsin*. University of Wisconsin Press, Madison.
- Kingsbury, B.A. – see Hileman et al. 2017, and Jordan et al. 2024.
- Kish, P.A. – see Bowne et al. 2018.
- Kleman, P.M. – see Kain et al. 2025.

- Kleinhenz, P. – see Casper and Kleinhenz 2016.
- Klemens, M.W. – see Meshaka et al. 2017.
- Klemish, J.L., R.M. Stiles, J.W. Swan, and M.J. Lannoo. 2022. Eastern newt, *Notophthalmus viridescens* (Rafinesque 1820). Pp. 382-391 In J.M. Kapfer and D.J. Brown (eds.). *Amphibians and Reptiles of Wisconsin*. University of Wisconsin Press, Madison.
- Klemish, J.L., and T.A.G. Rittenhouse. 2022. Wood frog, *Lithobates sylvaticus* (LeConte 1825). Pp. 290-303 In J.M. Kapfer and D.J. Brown (eds.). *Amphibians and Reptiles of Wisconsin*. University of Wisconsin Press, Madison.
- Klinkhardt, K., and G. Höbel. 2019. Warning colors in gray treefrogs: Aposematism or deimatic displays. P. 17 In *2018 Field Station Annual Report*. University of Wisconsin-Milwaukee, Milwaukee.
- Klos, R. – see Kiebler et al. 2020.
- Knowles, S. – see Lorch et al. 2016.
- Koch, S.L. – see Cannizzaro et al. 2023.
- Kohl, K.D., and J. Yahn. 2016. Effects of environmental temperature on the gut microbial communities of tadpoles. *Environmental Microbiology* 18(5):1,561-1,565.
- Kolhoff, B., T. Anderson, and M. Wikston. 2024. Geographic distribution: *Opheodrys vernalis* (Smooth Greensnake). *Herpetological Review* 55(4):522. (Lafayette Co.)
- Kolozsvary, M.B. – see Bowne et al. 2018.
- Kolthoff, C. – see Hughes et al. 2024.
- Kowalski, M.J. – see Hileman et al. 2017.
- Krumrie, J.E. – see White et al. 2020a, and White et al. 2020b.
- Kudlai, O. – see Scholz et al. 2023.
- Kuhn, A. – see Burbrink et al. 2022.
- Kuhns, A.R. – see Kastle et al. 2021, and King et al. 2021.
- Kulzer, P.J. – see Byer et al. 2021.
- Kuserk, F.T. – see Bowne et al. 2018.
- Kutok, N.J. – see Lafleur and Kutok 2022.
- Ladner, J.T., J.M. Palmer, C.L. Ettinger, J.E. Stajich, T.M. Farrell, B.M. Glorioso, B. Lawson, S.J. Price, A.G. Stengle, D.A. Grear, and J.M. Lorch. 2022. The population genetics of the causative agent of snake fungal disease indicate recent introductions to the USA. *PLoS Biology* 20(6):e3001676. doi.org/10.1371/journal.pbio.3001676.
- Lafleur, R. – see Cannizzaro et al. 2021.
- Lafleur, R.M. – see Cannizzaro and Lafleur 2023.
- Lafleur, R.M. 2022. Geographic distribution: *Lampropeltis triangulum* (Eastern Milksnake). *Herpetological Review* 53(1):79. (Clark Co.)
- Lafleur, R.M., J.S. Cannizzaro, N.G. Schiltz, A.F. Badje, N.C. Melhorn, and K.M. Banks. 2023. Filling in badger holes: New geographic distributional records for amphibians and reptiles in Wisconsin, USA. *Herpetological Review* 54(3):411-415.
- Lafleur, R.M., and J.M. Kapfer. 2022. Geographic distribution: *Pantherophis vulpinus* (Eastern Foxsnake). *Herpetological Review* 53(1):81. (Crawford Co.)
- Lafleur, R.M., and N.J. Kutok. 2022. Geographic distribution: *Hemidactylium scutatum* (Four-toed Salamander). *Herpetological Review* 53(1):68. (Marathon Co.)
- Lambert, M.R. – see MacGuigan et al. 2022.
- Lambert, M.R., and D.A. Steen. 2019. Reexamining effects of urbanization on population structure of freshwater turtles: Response to Bowne et al. 2018. *Conservation Biology* 33(5):1,193-1,196.

- Lamberti, G.A. – see Tozer et al. 2025.
- Langen, T.A. – see Marsh et al. 2017.
- Langford, J. – see Marsh et al. 2017.
- Lankau, E.W. – see Thompson et al. 2018.
- Lankton, J.S. – see Gentry et al. 2023, Lorch et al. 2016, and Lorch et al. 2021.
- Lannoo, M.J. – see Klemish et al. 2022.
- Lantz, K. – see Kiebler et al. 2020.
- Lapin, C.N. – see Badje et al. 2023, Badje et al. 2024, Bougie et al. 2020, Bougie et al. 2022, Bougie et al. 2023, Bougie et al. 2024, Brown and Lapin 2022, Fischer et al. 2017, Nfor et al. 2015, Spaid et al. 2025, Staggs et al. 2024, and Vraniak et al. 2017.
- Lapin, C.N., J.W. Tamplin, M.M. Cochrane, J.E. Woodford, D.J. Brown, and R.A. Moen. 2019. A regional analysis of *Glaptemys insculpta* (Wood Turtle) survival in the Upper Midwest of the USA. *Herpetological Conservation and Biology* 14(3):668-679.
- Larson, T. – see Marshall et al. 2021.
- Last, L.A. – see Lorch et al. 2016.
- Lauer, K. – see Marsh et al. 2017.
- Laughlin, M.M. – see Olson et al. 2023.
- Laughlin, M.M., E.R. Olson, and J.G. Martin. 2017. Arboreal camera trapping expands *Hyla versicolor* complex (Hylidae) canopy use to new heights. *Ecology* 98(8):2,221-2,223.
- Lawrence, G.J. – see Tozer et al. 2025.
- Lawson, B. – see Ladner et al. 2022.
- LeBrun, R.A. – see Ginsberg et al. 2020.
- LeClere, J. – see Michels-Boyce et al. 2018.
- Lee, S. – see Stevenson et al. 2017.
- Lee, Y.M. – see Hileman et al. 2017, Jordan et al. 2024, and Spaid et al. 2025.
- Lehner, A. 2022. Geographic distribution: *Hyla chrysoscelis* (Cope's Gray Treefrog). *Herpetological Review* 53(3):439. (Bayfield Co.)
- Leis, E. – see Standish et al. 2018a, and Standish et al. 2018b.
- Lemley, E.M. – see Patson et al. 2022, and Patson et al. 2022.
- Lentini, A.M. – see Hileman et al. 2017.
- Levine, B.A. – see Booth et al. 2024.
- Lewis, L.S. – see Kiebler et al. 2020.
- Lewis, T. – see Standish et al. 2018.
- Li, X., R.W. McLaughlin, and N.A. Grover. 2023. Characterization of antibiotic-resistant *Stenotrophomonas* isolates from painted turtles living in the wild. *Current Microbiology* 80(3):93. doi:10.1007/s00284-023-03193-4.
- Lindeman, P.V., and R.C. Vogt. 2024. *Graptemys pseudogeographica* (Gray 1831) – False map turtle, Mississippi map turtle. In A.G.J. Rhodin, J.B. Iverson, P.P. van Dijk, C.B. Stanford, E.V. Goode, K.A. Buhlmann, and R.A. Mittermeier (eds.). *Conservation Biology of Freshwater Turtles and Tortoises: A Compilation Project of the IUCN/SSC Tortoise and Freshwater Turtle Specialist Group. Chelonian Research Monographs* 5(18):124.1–124.19.
- Lindquist, E.S. – see Bowne et al. 2018.
- Lipps, G., Jr. – see Jordan et al. 2024.
- Lituma, C.M. – see Beard et al. 2023, and Beard et al. 2024.
- Litzgus, J.D. – see Davy et al. 2021.
- Lor, D.J. – see Kain et al. 2025.

- Lorch, J.M. – see Gentry et al. 2023, Ip et al. 2016, Isidoro-Ayza et al. 2019, Kapfer and Lorch 2022, Ladner et al. 2022, Raimond and Lorch 2022, Schiltz and Lorch 2016, and Staffen and Lorch 2022.
- Lorch, J.M. 2022. Slender glass lizard, *Ophisaurus attenuatus* (Cope 1880). Pp. 396-409 In J.M. Kapfer and D.J. Brown (eds.). *Amphibians and Reptiles of Wisconsin*. University of Wisconsin Press, Madison.
- Lorch, J.M., S. Knowles, J.S. Lankton, K. Mitchell, J.L. Edwards, J.M. Kapfer, R.A. Staffen, E.R. Wild, K.Z. Schmidt, A.E. Ballmann, D. Blodgett, T.M. Ferrell, B.M. Glorioso, L.A. Last, S.J. Price, K.L. Schuler, C.E. Smith, J.F.X. Wellehan, Jr., and D.S. Blehert. 2016. Snake fungal disease: an emerging threat to wild snakes. *Philosophical Transactions of the Royal Society, B* 371:20150457.
- Lorch, J. M., S.J. Price, J.S. Lankton, and A.N. Drayer. 2021. Confirmed cases of ophidiomycosis in museum specimens from as early as 1945, United States. *Emerging Infectious Diseases* 27(7):1,986-1,989.
- Lovich, R. – see Allender et al. 2020, and Petersen et al. 2018.
- Lundeen, D., and A.F. Badje. 2017. Geographic distribution: *Emydoidea blandingii* (Blanding's Turtle). *Herpetological Review* 48(2):386. (Pierce Co.)
- Lyons, J. – see Marshall et al. 2021.
- Maass, C. 2021. Springtime for toads. *Wisconsin Natural Resources Magazine* 45(1):48-49.
- Macedo, A.D., and H.M. Holmquist. 2022. Natural history notes: *Necturus maculosus* (Mudpuppy). Nest Description. *Herpetological Review* 53(2):279-280.
- MacGuigan, D.J., G.G. Mount, G.J. Watkins-Colwell, T.J. Near, and M.R. Lambert. 2022. Genomic data clarify *Aquarana* systematics and reveal isolation-by-distance dominates phylogeography of the wide-ranging frog *Rana clamitans*. *Ichthyology & Herpetology* 110(3):602-617.
- Macklin, J., and D.J. Watermolen. 2024. Attempted red-winged blackbird predation on a hatchling painted turtle. *Bulletin of the Chicago Herpetological Society* 59(7):103-105.
- Magana, R.J. – see Mertig et al. 2019.
- Maki, E. – see Jaimes et al. 2025.
- Maki, E., G. Jaimes, and B. Reinke. 2023. Water turbidity and plant density influence shell shape in painted turtles (*Chrysemys picta*). *Herpetologica* 79(3):144-150.
- Malotka, S.E. – see Michels-Boyce et al. 2018.
- Mankiewicz, C. – see Bowne et al. 2018.
- Mann, A., and D.J. Watermolen. 2021. A leucistic American toad (*Anaxyrus americanus*) from Wisconsin. *Bulletin of the Chicago Herpetological Society* 56(6):88-91.
- Manninen, J.D., and J.S. Cannizzaro, IV. 2023. Herpetoculture notes: *Notophthalmus viridescens dorsalis* (Broken-striped Newt). Courtship behavior. *Herpetological Review* 54(1):60-61. (Note reports observations of behaviors in a captive specimen).
- Manorome, P. – see Davy et al. 2021.
- Mans, C. – see Patson et al. 2022, and Patson et al. 2022.
- March, J.G. – see Bowne et al. 2018.
- Marchand, M. – see Jordan et al. 2024.
- Marcquenski, S. – see Marshall et al. 2021.
- Marini, D. – see Di Nicola et al. 2022.
- Maritz, B. – see Barends and Maritz 2022.
- Markle, T. – see Brown et al. 2025.
- Marks, S. – see Davy et al. 2021.

- Marsh, D.M., B.J. Cosentino, K.S. Jones, J.J. Apodaca, K.H. Beard, J.M. Bell, C. Bozarth, D. Carper, J.F. Charbonnier, A. Dantas, E.A. Forys, M. Foster, J. General, K.S. Genet, M. Hanneken, K.R. Hess, S.A. Hill, F. Iqbal, N.E. Karraker, E.S. Kilpatrick, T.A. Langen, J. Langford, K. Lauer, A.J. McCarthy, J. Neale, S. Patel, A. Patton, C. Southwick, N. Stearrett, N. Steijn, M. Tasleem, J.M. Taylor, and J.R. Vonesh. 2017. Effects of roads and land use on frog distributions across spatial scales and regions in the eastern and central United States. *Diversity & Distributions* 23(2):158-170.
- Marshall, D.W., J. Lyons, S. Marcquenski, T. Larson, and J. Unmuth. 2021. Conserving the starhead topminnow *Fundulus dispar* in Wisconsin: 2. Conservation aquaculture. *American Currents* 46(3):4-9. (Includes mention of several amphibians and reptiles in an Iowa County pond.)
- Marshall, J.C. – see Hileman et al. 2017.
- Martin, B.T. – see Hughes et al. 2024.
- Martin, J.G. – see Laughlin et al. 2017, and Olson et al. 2023.
- Martin, W.H. – see Breisch et al. 2021.
- Matthias, L.P. – see Walters et al. 2016.
- Mauger, D. – see Hileman et al. 2017.
- Mayer, G.C. – see Paloski et al. 2017.
- Mays, J. – see Jordan et al. 2024.
- McAllister, C.T. – see Scholz et al. 2023, and Shannon et al. 2025.
- McCarthy, A.J. – see Marsh et al. 2017.
- McCollum, S.A. – see Bernstein et al. 2023.
- McKeag, E.M., and R.B. King. 2022. Common watersnake, *Nerodia sipedon* (Linnaeus 1758). Pp. 560-573 In J.M. Kapfer and D.J. Brown (eds.). *Amphibians and Reptiles of Wisconsin*. University of Wisconsin Press, Madison.
- McKenzie, C. – see Davy et al. 2021.
- McLaughlin, R.W. – see Fugate et al. 2020, Li et al. 2023, and Nfor et al. 2015.
- Meck, J.R., M.T. Jones, T.S.B. Akre, A. Badje, S. Buchanan, K. Gipe, J. Kleopfer, R. Nagle, K. Oxenrider, H.P. Roberts, J. Slacum, and L.L. Willey (eds.). 2023. Abstracts from the 3rd Emydine Conservation Symposium, Huntingdon, PA. July 10–12, 2023. American Turtle Observatory, New Salem, MA.
- Melhorn, N.C. – see Lafleur et al. 2023, and Polencheck and Melhorn 2024.
- Mertig, G., C. Nelson, R.J. Magana, and R.A. Staffen. 2019. Geographic distribution: *Emydoidea blandingii* (Blanding's Turtle). *Herpetological Review* 50(1):99-100. (Ashland Co.)
- Meshaka, W.E., Jr. – see Hughes et al. 2024.
- Meshaka, W.E., Jr., J.W. Gibbons, D.F. Hughes, M.W. Klemens, and J.B. Iverson. 2017. *Kinosternon subrubrum* (Bonnaterre 1789) – Eastern mud turtle. In A.G.J. Rhodin, J.B. Iverson, P.P. van Dijk, K.A. Buhlmann, P.C.H. Pritchard, and R.A. Mittermeier (eds.). Conservation Biology of Freshwater Turtles and Tortoises: A Compilation Project of the IUCN/SSC Tortoise and Freshwater Turtle Specialist Group. *Chelonian Research Monographs* 5(10):101.1–101.16.
- Michels-Boyce, M., B. Pearson, S.E. Malotka, and J. LeClere. 2018. Natural history notes: *Plestiodon fasciatus* (Five-lined Skink). Ectoparasites. *Herpetological Review* 49(4):745.
- Milanovich, J.R. – see Struecker and Milanovich 2017.
- Miller, D. – see Reinke et al. 2020.
- Miller, D.A.W. – see Kain et al. 2025.
- Miller, D.I. – see Brunner et al. 2021.

- Miller, G.J. 2022. Eastern hog-nosed snake, *Heterodon platirhinos* (Latreille 1801), Pp. 546-559
In J.M. Kapfer and D.J. Brown (eds.). *Amphibians and Reptiles of Wisconsin*. University of
Wisconsin Press, Madison.
- Miller, J.L. – see Ginsberg et al. 2020.
- Miller, K. – see Byer et al. 2021.
- Millis, B.S., and A.F. Badje, 2019. Geographic distribution: *Pantherophis vulpinus* (Eastern
Foxsnake). *Herpetological Review* 50(3):530-531. (Lincoln Co.)
- Millspaw, N. – see Jordan et al. 2019.
- Misfud, D. – see Harding and Misfud 2017.
- Mitchell, J. – see Wilson et al. 2024.
- Mitchell, K. – see Lorch et al. 2016.
- Mitchem, L. – see Kastle et al. 2021.
- Mladenoff, D.J. – see Reid et al. 2017.
- Mockford, S.W. – see Jordan et al. 2019.
- Moe, K., and A.F. Badje. 2017. Geographic distribution: *Apalone spinifera* (Spiny Softshell).
Herpetological Review 48(2):386. (Ashland Co.)
- Moen, R. – see Staggs et al. 2023.
- Moen, R.A. – see Beard et al. 2024, Lapin et al. 2019, Spaid et al. 2025, Staggs et al. 2024, and
Staggs et al. 2025.
- Moldowan, P.D. 2023. Hyperpredation of freshwater turtles and tortoises by subsidized
corvids. *Herpetological Monographs* 37(1):70-94.
- Moore, J.A. – see Hileman et al. 2017.
- Morrissey, J.S., B. Barr, A.E. Austin, L.R. Babcock, and R. Powell. 2020. Do latitude, elevation,
temperature, and precipitation influence body and clutch sizes of female common five-
lined skinks, *Plestiodon fasciatus* (Linnaeus, 1758)? *Journal of North American Herpetology*
2020(1):32-41.
- Mota, J.L. – see Spaid et al. 2025.
- Mount, G.G. – see MacGuigan et al. 2022.
- Mozuch, J. – see Kastle et al. 2021.
- Muehlfield, T. – see Kapfer and Muehlfield 2016a, Kapfer and Muehlfield 2016b, Kapfer and
Muehlfield 2017a, Kapfer and Muehlfield 2017b, Kapfer and Muehlfield 2018a, and Kapfer
and Muehlfield 2018b.
- Muir, T.J. – see Bowne et al. 2018.
- Mumaw, V. – see Jordan et al. 2019.
- Mumm, L. – see Winter et al. 2020.
- Murphy, M.P. – see Bundgaard et al. 2018.
- Murray, K.G. – see Bowne et al. 2018.
- Murray, S. – see Pulkowski et al. 2020.
- Muths, E. – see Kain et al. 2025.
- Myers, E.A. – see Harrington et al. 2024.
- Nadeau, S.M. – see Casper et al. 2018, and Casper and Nadeau 2019.
- Naze, D. 2018. Readers write: You can tell from the smell. *Wisconsin Natural Resources*
Magazine 42(4):29. (Includes a photograph of a frog and reply regarding the odor
associated with mink frogs.)
- Neale, Z. – see Marsh et al. 2017.
- Near, T.J. – see MacGuigan et al. 2022.
- Nelson, C. – see Mertig et al. 2019.

- Nelson, J.S. - see Paisley et al. 2024.
- Nelson, D., and G. Höbel. 2017. Reproductive allocation in *Hyla versicolor*: Evaluating the influence of female size and temporal factors on egg production. P. 24 *In* 2016 *Field Station Annual Report*. University of Wisconsin-Milwaukee, Milwaukee.
- Nemeth, N. – see Davy et al. 2021.
- Nfor, N.N., C.N. Lapin, and R.W. McLaughlin. 2015. Isolation of *Bacillus cereus* group from the fecal material of endangered wood turtles. *Current Microbiology* 71(4):524-527.
- Nielsen, C.K. – see Urbanek et al. 2016.
- Niemi, G.J. – see Tozer et al. 2025.
- Notaro, M. – see Fitzpatrick et al. 2020.
- Notomista, T. – see Di Nicola et al. 2022.
- Nowak, M. – see Hennes et al. 2018.
- Nurre, A. 2018. Readers write: Family favorites. *Wisconsin Natural Resources Magazine* 42(4):29. (Includes a photograph of a pair of northern water snakes.)
- O'Donnell, R.P. 2012. Genetic diversity and genetic structuring at multiple spatial scales across the range of the northern leopard frog, *Rana pipiens*. Ph.D. dissertation. Utah State University, Logan, UT.
- Ogden, N.H. – see Ginsberg et al. 2020.
- O'Hearn, D.J., 2025. Multiscale glass lizard conservation genomics. Ph.D. dissertation. University of Illinois Urbana-Champaign.
- O'Krongly, D. 2019. Readers write: Garden companions. *Wisconsin Natural Resources Magazine* 43(4):29. (Includes a photograph of common garter snakes.)
- Oldehoeft, E. – see Stratman et al. 2021, and Stratman et al. 2022.
- Oldehoeft, E.A. – see Stratman et al. 2021.
- O'Leathlobhair, J.L., and R.C. Jadin. 2023. Unusual bedfellows: Observations of cohabitation between two hylids and paper wasps in central Wisconsin. *Bulletin of the Chicago Herpetological Society* 58(8):121-123.
- Olson, D.H. – see Brunner et al. 2021.
- Olson, E.R. – see Laughlin et al. 2017.
- Olson, E.R., M.M. Laughlin, and J.G. Martin. 2023. Reaching new heights: Arboreal camera trapping provides new insights on the ecology of gray treefrogs (*Hyla versicolor*). *Journal of Herpetology* 57(3):281-289.
- Orjuela, J.S., and G. Höbel. 2017. Correlation of handedness and ear preference in gray treefrogs. P. 27 *In* 2016 *Field Station Annual Report*. University of Wisconsin-Milwaukee, Milwaukee.
- Orlofske, S.A. – see Jadin and Orlofske 2020.
- Orlofske, S.A. 2025. Acceptance of the 2025 Henry Baldwin Ward Medal: From tadpoles to trematodes—childhood wetland experiences lead to a parasite passion. *Journal of Parasitology* 111(6):843–850.
- Ospina, E. – see Allender et al. 2020.
- Otten, J.G. – see Hughes et al. 2023.
- Overcast, I. – see Harrington et al. 2024.
- Owen, P.C. – see Kapfer and Owen 2022.
- Owen, P.C. 2022. Green frog, *Lithobates clamitans* (Latreille 1801). Pp. 241-252 *In* J.M. Kapfer and D.J. Brown (eds.). *Amphibians and Reptiles of Wisconsin*. University of Wisconsin Press, Madison.

- Paisley, R.N., A. Bartels, J.F. Wetzel, M.G. Hamernick, J.S. Nelson, and C. Stetzer. 2024. Natural history notes: *Chelydra serpentina* (Snapping Turtle). Longevity. *Herpetological Review* 55(2):248.
- Paisley, R.N., and R.W. Hay. 2022. Smooth softshell, *Apalone mutica* (LeSueur 1827). Pp. 840-849 In J.M. Kapfer and D.J. Brown (eds.). *Amphibians and Reptiles of Wisconsin*. University of Wisconsin Press, Madison.
- Palmer, J.M. – see Ladner et al. 2022.
- Paloski, R. 2016. Wisconsin frog and toad survey: Thirty-five years of monitoring in Wisconsin. *Wisconsin Natural Resources Magazine* 40(2):14-16.
- Paloski, R.A. – see Badje et al. 2016, Badje et al. 2020, Badje et al. 2021, Breitenbach et al. 2020, Buchanan et al. 2022, Carlson et al. 2023, Hileman et al. 2017, Kapfer et al. 2022, Staffen and Paloski 2017a, Staffen and Paloski 2017b, and Watson et al. 2020.
- Paloski, R.A. 2020. Geographic distribution: *Hyla versicolor* (Gray Treefrog). *Herpetological Review* 51(4):769. (Dane Co.)
- Paloski, R.A. 2022a. Geographic distribution: *Hyla chrysoscelis* (Cope's Gray Treefrog). *Herpetological Review* 53(1):71. (Barron Co.)
- Paloski, R.A. 2022b. Prairie skink, *Plestiodon septentrionalis* (Baird 1858). Pp. 423-432 In J.M. Kapfer and D.J. Brown (eds.). *Amphibians and Reptiles of Wisconsin*. University of Wisconsin Press, Madison.
- Paloski, R.A., A.F. Badje, and T.L.E. Bergeson. 2022. Blanchard's cricket frog, *Acris blanchardi* (Harper 1947). Pp. 161-176 In J.M. Kapfer and D.J. Brown (eds.). *Amphibians and Reptiles of Wisconsin*. University of Wisconsin Press, Madison.
- Paloski, R.A., A.F. Badje, R.A. Staffen, and T.L.E. Bergeson. 2018. Geographic distribution: *Lithobates catesbeianus* (American Bullfrog). *Herpetological Review* 49(1):70. (Green Co.)
- Paloski, R.A., E.T. Hileman, G.C. Mayer, G.W. Schuurman, and J.M. Kapfer. 2017. Geographic distribution: *Thamnophis radix* (Plains Gartersnake). *Herpetological Review* 48(3):591-592. (Waukesha Co.)
- Paloski, R.A., S.A. Rowe, and A.F. Badje. 2016. Geographic distribution: *Diadophis punctatus edwardsii* (Northern Ring-necked Snake). *Herpetological Review* 47(4):629-630. (Monroe Co.)
- Paloski, R.A., G.W. Schuurman, and J.M. Kapfer. 2020. Geographic distribution: *Thamnophis radix* (Plains Gartersnake). *Herpetological Review* 51(1):82.
- Paloski, R.A., S.E. Viernum, and T.L.E. Bergeson. 2022. Northern leopard frog, *Lithobates pipiens* (Schreber 1782). Pp. 268-281 In J.M. Kapfer and D.J. Brown (eds.). *Amphibians and Reptiles of Wisconsin*. University of Wisconsin Press, Madison.
- Palsbøll, P.J. – see Reid et al. 2016.
- Pan, T. – see Kain et al. 2025.
- Pang, G. – see Ginsberg et al. 2020.
- Pappas, M.J. – see Geller et al. 2020.
- Parker, S.L. – see Geller and Parker 2022.
- Patel, S. – see Marsh et al. 2017.
- Paterson, J.E. – see Davy et al. 2021.
- Patson, C.N., E.M. Lemley, and C. Mans. 2022. Outcome of common snapping turtles (*Chelydra serpentina*) treated for acute traumatic partial carapace avulsion: 12 cases (2014-2021). *Journal of Exotic Pet Medicine* 43:4-10.
- Patson, C.N., E.M. Lemley, E.W. Smalley, G.A. Doss, and C. Mans. 2022. Successful outcome of shell fractures in freshwater turtles treated with plate or screws and wire fixation

- techniques: 51 cases (2014-2019). *Journal of the American Veterinary Medical Association* 260(7):1-6.
- Patton, A. – see Marsh et al. 2017.
- Pauli, J.N. – see Bougie et al. 2020, Bougie et al. 2022, Bougie et al. 2023, Fitzpatrick et al. 2019, and Fitzpatrick et al. 2020.
- Pauly-Hubbard, E.C. – see Bougie et al. 2023, and Buchanan et al. 2022.
- Pauly-Hubbard, E.C., and M. Wikston. 2024. Geographic distribution: *Ambystoma laterale* (Blue-spotted Salamander). *Herpetological Review* 55(4):515. (Pepin Co.)
- Pearl, C.A. – see Kain et al. 2025.
- Pearson, B. – see Michels-Boyce et al. 2018.
- Peery, M.Z. – see Bougie et al. 2020, Bougie et al. 2022, Bougie et al. 2023, Byer et al. 2020, Byer et al. 2021, Hamilton et al. 2018, Reid et al. 2016, Reid et al. 2016, and Reid et al. 2017.
- Pérez-González, S.E. – see Cordero et al. 2024.
- Petersen, C. – see Allender et al. 2020.
- Petersen, C.E. – see Breisch et al. 2021.
- Petersen, C.E., R. Lovich, and S. Stallings. 2018. Amphibians and reptiles of United States Department of Defense installations. *Herpetological Conservation and Biology* 13(3):652–661. (Fort McCoy)
- Peterson, J. 2020. Driftless terroir: Researching our slimy, scaly vernal voices. *Voice of the River Valley* 15(3):16-17.
- Peterson, J.D. – see Badje et al. 2022a, Badje and Peterson 2022b, and Badje and Peterson 2022.
- Phillips, C.A. – see Allender et al. 2020, and Hileman et al. 2017.
- Phillips, K. – see Standish et al. 2018.
- Pidgeon, A.M. – see Hamilton et al. 2018.
- Pittsley, M., and M. Wikston. 2025. Geographic distribution: *Notophthalmus viridescens* (Eastern Newt). *Herpetological Review* 56(1):32. (Grant Co.)
- Placyk, J.S., Jr. – see Blais et al. 2021.
- Plummer, M.V. – see Cordero et al. 2024.
- Polencheck, M.J. 2023. Geographic distribution: *Necturus maculosus* (Mudpuppy). *Herpetological Review* 54(4):590. (Iowa Co.)
- Polencheck, M.J. 2024a. Natural history notes: *Necturus maculosus* (Mudpuppy). Cannibalism. *Herpetological Review* 55(2):234-235.
- Polencheck, M.J. 2024b. Natural history notes: *Necturus maculosus* (Mudpuppy). Polymelia. *Herpetological Review* 55(2):235.
- Polencheck, M.J., and N.C. Melhorn. 2024. Natural history notes: *Necturus maculosus* (Mudpuppy). Aggression and Diet. *Herpetological Review* 55(2):234.
- Porter, W.P. – see Fitzpatrick et al. 2019, and Fitzpatrick et al. 2020.
- Possardt, E. – see Breisch et al. 2021.
- Powell, R. – see Morrissey et al. 2020.
- Powell, R., R. Conant, and J.T. Collins. 2016. *Peterson Field Guide to Reptiles and Amphibians of Eastern and Central North America*, 4th ed. Houghton Mifflin Harcourt Publishing Co., New York, NY.
- Powell, R., J.T. Collins, and E.D. Hooper, Jr. 2019. *Key to the Herpetofauna of the Continental United States and Canada*, 3rd ed. University Press of Kansas, Lawrence, KS.
- Pratt, P.D. – see Hileman et al. 2017.
- Preney, T. – see Hileman et al. 2017.
- Price, S.J. – see Ladner et al. 2022, Lorch et al. 2016, and Lorch et al. 2021.

- Price, S.J. 2022. Mink frog, *Lithobates septentrionalis* (Baird 1854). Pp. 282-289 In J.M. Kapfer and D.J. Brown (eds.). *Amphibians and Reptiles of Wisconsin*. University of Wisconsin Press, Madison.
- Pringle, A. – see Gentry et al. 2023.
- Prior, K.A. – see Hileman et al. 2017.
- Promaine, A. – see Hileman et al. 2017.
- Pulkowski, R., S. Murray, E. Czosnek, and G. Höbel. 2020. Variation in throat pigmentation and yellow leg color in male eastern gray treefrogs, and their influence on mating success. Pp. 26-27 In 2019 *Field Station Annual Report*. University of Wisconsin-Milwaukee, Milwaukee.
- Quigley, K.M. – see Raschke et al. 2019.
- Radeloff, V.C. – see Hamilton et al. 2018.
- Raimond, C. 2017. Geographic distribution: *Graptemys geographica* (Northern Map Turtle). *Herpetological Review* 48(2):386. (Jackson Co.)
- Raimond, C., and J.M. Lorch. 2022. Lined snake, *Tropidoclonion lineatum* (Hallowell 1856). Pp. 666-677 In J.M. Kapfer and D.J. Brown (eds.). *Amphibians and Reptiles of Wisconsin*. University of Wisconsin Press, Madison.
- Raimond, C., and E. Thomsen. 2016. Geographic distribution: *Opeodrys vernalis* (Smooth Greensnake). *Herpetological Review* 47(4):631. (Crawford Co.)
- Raschke, R., B.R. Sturtevant, and K.M. Quigley. 2019. Geographic distribution: *Emydoidea blandingii* (Blanding's Turtle). *Herpetological Review* 50(1):99. (Bayfield Co.)
- Ravesi, M.J. – see Allender et al. 2020.
- Ray, J.M., R.M. Wergeland, and J. Karafa. 2024. Earthworms as a prey source for the insular snake *Thamnophis sirtalis* (Linnaeus, 1758). *Herpetozoa* 37:197-200.
- Ready, Z.C., L. Adamovicz, J.F.X. Wellehan, M. Daleo, A. Simmons, G. Glowacki, W. Graser, C. Anchor, D. Thompson, and M.C. Allender. 2025. Detection of adenoviruses in free-ranging Blanding's turtles (*Emydoidea blandingii*), painted turtles (*Chrysemys picta*), and red-eared sliders (*Trachemys scripta elegans*) in Illinois, USA. *Journal of Wildlife Diseases* 61(2):370-381. (One of the sample sites used in the study extended into Wisconsin.)
- Redmer, M. – see Hileman et al. 2017.
- Reed, B.M. – see Hughes et al. 2023, and Hughes et al. 2024.
- Reichert, M. – see Feagles et al. 2019.
- Reichert, M.S., and G. Höbel. 2017a. Frequency-channel dependent selectivity for temporal call characteristics in gray treefrogs, *Hyla versicolor*. P. 29 In 2016 *Field Station Annual Report*. University of Wisconsin-Milwaukee, Milwaukee.
- Reichert, M.S., and G. Höbel. 2017b. Frequency channel-dependent selectivity for temporal call characteristics in gray treefrogs, *Hyla versicolor*. *Journal of Experimental Biology* 220:1,256-1,266.
- Reid, B. – see Hamilton et al. 2018.
- Reid, B.N. – see Byer et al. 2020, Byer et al. 2021, and Jordan et al. 2024.
- Reid, B.N., D.J. Mladenoff, and M.Z. Peery. 2017. Genetic effects of landscape, habitat preference and demography on three co-occurring turtle species. *Molecular Ecology* 26(3):781-798.
- Reid, B.N. and P.C. Riddle. 2017a. Geographic distribution: *Hemidactylum scutatum* (Four-toed Salamander). *Herpetological Review* 48(4):805. (Wood Co.)
- Reid, B.N. and P.C. Riddle. 2017b. Geographic distribution: *Heterodon platirhinos* (Eastern Hog-nosed Snake). *Herpetological Review* 48(4):814. (Wood Co.)

- Reid, B.N, R.P. Thiel, P.J. Palsbøll, and M.Z. Peery. 2016. Linking genetic kinship and demographic analyses to characterize dispersal: Methods and application to Blanding's turtle. *Journal of Heredity* 107(7):603-614.
- Reid, B.N, R.P. Thiel, and M.Z. Peery. 2016. Population dynamics of endangered Blanding's turtles in a restored area. *Journal of Wildlife Management* 80(3):553-562.
- Reinert, H.K. – see Hileman et al. 2017.
- Reinke, B.A. – see Jaimes et al. 2025, Maki et al. 2023, and Stasiak and Reinke 2025.
- Reinke, B.A., R. Calsbeek, and D. Stuart-Fox. 2017. A test of antipredatory function of conspicuous plastron coloration in hatchling turtles. *Evolutionary Ecology* 31:463-476.
- Reinke, B.A., L. Hoekstra, A.M. Bronikowski, F.J. Janzen, and D. Miller. 2020. Joint estimation of growth and survival from mark-recapture data to improve estimates of senescence in wild populations. *Ecology* 101(1):e02877.
- Renfrew, R.B., and C.A. Ribic. 2003. Grassland passerine nest predators near pasture edges identified by videotape. *Auk* 120(2):371-383.
- Reporter, R. – see Walters et al. 2016.
- Rhymer, J. – see Jordan et al. 2024.
- Ribic, C.A. – see Brown and Ribic 2022, Byers et al. 2017, and Renfrew and Ribic 2003.
- Riddle, P.C. – see Reid and Riddle 2017a, and Reid and Riddle 2017b.
- Rittenhouse, T.A.G. – see Klemish and Rittenhouse 2022.
- Robaidek, J. – see Badje et al. 2020, and Watson et al. 2020.
- Roberts, E. – see Kiebler et al. 2020.
- Robertson, C., V. Underhill, and G. Höbel. 2017. Missing the dark? Effects of anthropogenic light population on female treefrogs. P. 30 *In* 2016 *Field Station Annual Report*. University of Wisconsin-Milwaukee, Milwaukee.
- Robinson, C.W. – see Kain et al. 2025.
- Rogall, G.M. – see Thompson et al. 2018.
- Ross, B.E. – see Dertien et al. 2020.
- Roth, M. – see Sadinski et al. 2018.
- Rouse, J.D. – see Hileman et al. 2017.
- Rowe, S.A. – see Paloski et al. 2016.
- Ruan, S. – see Burbrink et al. 2022.
- Ruder, E. – see Höbel and Ruder 2018.
- Ruder, E., and G. Höbel. 2018. Throat color in eastern gray treefrogs. P. 15 *In* 2017 *Field Station Annual Report*. University of Wisconsin-Milwaukee, Milwaukee.
- Ruder, E., and G. Höbel. 2019. Variation in throat pigmentation and its influence in mating success in eastern gray treefrogs. P. 22 *In* 2018 *Field Station Annual Report*. University of Wisconsin-Milwaukee, Milwaukee.
- Rudolph, N. – see Kastle et al. 2021.
- Rulison, E.L. – see Ginsberg et al. 2020.
- Rumrill, C. – see Kain et al. 2025.
- Rutherford, R.D. – see Casper et al. 2020a, Casper et al. 2020b, Casper et al. 2021, Casper et al. 2022, Casper and Rutherford 2016, Casper and Rutherford 2018a, Casper and Rutherford 2018b, and Casper and Rutherford 2018c.
- Rutherford, R.D. 2022a. Natural history notes: *Chelydra serpentina* (Snapping Turtle). Diet. *Herpetological Review* 53(2):305-306.
- Rutherford, R.D. 2022b. Natural history notes: *Chrysemys picta* (Painted Turtle). Egg Mortality. *Herpetological Review* 53(2):309.

- Rutherford, R.D., and G.S. Casper. 2018. Geographic distribution: *Notophthalmus viridescens louisianensis* (Central Newt). *Herpetological Review* 49(2):281. (Shawano Co.)
- Rutzan, K. – see Kastle et al. 2021.
- Sabol, A. – see Walters et al. 2016.
- Sacerdote-Velat, A.B. 2022. Smooth greensnake, *Opheodrys vernalis* (Harlan 1927). Pp. 471-4482 In J.M. Kapfer and D.J. Brown (eds.). *Amphibians and Reptiles of Wisconsin*. University of Wisconsin Press, Madison.
- Sadinski, W., A.L. Gallant, M. Roth, J. Brown, G. Senay, W. Brininger, P.M. Jones, and J. Stoker. 2018. Multi-year data from satellite- and ground-based sensors show details and scale matter in assessing climate's effects on wetland surface water, amphibians, and landscape conditions. *PLoS ONE* 13(9):e0201951.
- Sajdak, R.A. 2022a. Gray ratsnake, *Pantherophis spiloides* (Duméril, Bibron, and Duméril 1854). Pp. 483-494 In J.M. Kapfer and D.J. Brown (eds.). *Amphibians and Reptiles of Wisconsin*. University of Wisconsin Press, Madison.
- Sajdak, R.A. 2022b. Western wormsnaek, *Carphophis vermis* (Kennicott 1859). Pp. 526-532 In J.M. Kapfer and D.J. Brown (eds.). *Amphibians and Reptiles of Wisconsin*. University of Wisconsin Press, Madison.
- Sajdak, R.A., R.W. Hay, and C.S. Berg. 2022. Timber rattlesnake, *Crotalus horridus* (Linnaeus 1758). Pp. 678-694 In J.M. Kapfer and D.J. Brown (eds.). *Amphibians and Reptiles of Wisconsin*. University of Wisconsin Press, Madison.
- Sajdak, R.A., and D.J. Watermolen. 2022. Mudpuppy, *Necturus maculosus* (Rafinesque). Pp. 369-381 In J.M. Kapfer and D.J. Brown (eds.). *Amphibians and Reptiles of Wisconsin*. University of Wisconsin Press, Madison.
- Sample, D.W. – see Byers et al. 2017.
- Sander, W.E., R. King, W. Graser, J.M. Kapfer, A.I. Engel, L. Adamovicz, and M.C. Allender. 2021. *Coxiella burnetii* in 3 species of turtles in the Upper Midwest, United States. *Emerging Infectious Diseases* 27(12):3,199-3,202.
- Santulli, M.N. – see Bowne et al. 2018.
- Scharosch, J. – see Hughes et al. 2023.
- Schiltz, N.G. – see Bougie et al. 2023, and Lafleur et al. 2023.
- Schiltz, N.G., and J.M. Lorch. 2016. Geographic distribution: *Notophthalmus viridescens* (Eastern Newt). *Herpetological Review* 47(4):621. (Marathon Co.)
- Schindler, K.D., L. Breitenbach, and E.R. Wild. 2024. Geographic distribution: *Diadophis punctatus* (Ring-necked Snake) *Herpetological Review* 55(1):42. (Pierce Co.)
- Schlater, L.K. – see Kiebler et al. 2020.
- Schmanski, M. – see Cannizzaro and Schmanski 2022.
- Schmidt, K.Z. – see Lorch et al. 2016.
- Schmidt, M. – see Casper and Schmidt 2016.
- Schmitt, S.J. – see Cochran and Schmitt 2016.
- Schmitz, J. – see Standish et al. 2018a
- Schmitz, N. – see Standish et al. 2018b.
- Scholz, T., A. de Chambrier, O. Kudlai, V.V. Tkach, and C.T. McAllister. 2023. A global survey of tapeworms (Cestoda: Proteocephalidae) of 'true' frogs (Amphibia: Ranidae), including a tabulated list of all proteocephalids parasitising amphibians. *Folia Parasitologica* 70:2023.009. doi:10.14411/fp.2023.009.
- Schuett, G.W. - see Booth et al. 2024.

- Schuler, A., and A.F. Badje. 2019. Geographic distribution: *Glyptemys insculpta* (Wood Turtle). *Herpetological Review* 50(2):324. (Dunn Co.)
- Schuler, K.L. – see Lorch et al. 2016.
- Schuurman, G.W. – see Badje et al. 2016, Kapfer et al. 2022, Paloski et al. 2017, and Paloski et al. 2020.
- Sealy, J.B. – see Breisch et al. 2021.
- Seiders, J., and D.J. Watermolen. 2022. Ring-billed gull predation on eastern tiger salamanders. *Bulletin of the Chicago Herpetological Society* 57(4):65-67.
- Self, S. – see Dertien et al. 2020.
- Semken, H.A., Jr. – see Theler et al. 2016.
- Senay, G. – see Sadinski et al. 2018.
- Shannon, R.P. 2022. Hidden in plain sight: Morphological and genetic diversity of blood protozoa from North American amphibians. Ph.D. Dissertation. Oklahoma State University, Stillwater, OK.
- Shannon, R.P., and M.G. Bolek. 2023. A method for isolating and sequencing trypanosome cells to investigate species associations in multiple morphotype infections. *Journal of Parasitology* 109(6):592-602.
- Shannon, R.P., C.T. McAllister, and M.G. Bolek. 2025. Morphological and molecular characterization of *Hepatozoon* species infecting frogs and snakes across the central and eastern United States. *Journal of Parasitology* 111(5):674–689.
- Sheldon, A.B., and A.F. Badje. 2016. Geographic distribution: *Pseudacris maculata* (Boreal Chorus Frog). *Herpetological Review* 47(4):624. (Trempealeau Co.)
- Shirose, L. – see Davy et al. 2021.
- Shoemaker, K.T. – see Hileman et al. 2017.
- Sicignano, F.J. – see Bowne et al. 2018.
- Siddons, S.R. – see Wild and Siddon 2022.
- Siddons, S.R. 2022a. Cope's gray treefrog, *Hyla chrysoscelis* (Cope 1880) Pp. 180-192 In J.M. Kapfer and D.J. Brown (eds.). *Amphibians and Reptiles of Wisconsin*. University of Wisconsin Press, Madison.
- Siddons, S.R. 2022b. Gray treefrog, *Hyla versicolor* (LeConte 1825). Pp. 193-205 In J.M. Kapfer and D.J. Brown (eds.). *Amphibians and Reptiles of Wisconsin*. University of Wisconsin Press, Madison.
- Sigler, L. – see Davy et al. 2021.
- Simmons, A. - see Ready et al. 2025.
- Simmons, L. – see Kiebler et al. 2020, and Walters et al. 2016.
- Skawinski, P.M. – see Kapfer and Skawinski 2022.
- Skawinski, P.M. 2020. Geographic distribution: *Sternotherus odoratus* (Eastern Musk Turtle). *Herpetological Review* 51(1):75. (Adams Co.)
- Skryja, D. 2017. Geographic distribution: *Graptemys geographica* (Northern Map Turtle). *Herpetological Review* 48(2):386. (Waukesha Co.)
- Slavic, D. – see Davy et al. 2021.
- Slavic, E. – see Davy et al. 2021.
- Smalley, E.W. – see Patson et al. 2022.
- Smalling, K.L. – see Kain et al. 2025.
- Smallwood, P.D. – see Bowne et al. 2018.
- Smee, A. – see Walters et al. 2016.
- Smith, B.E. – see Blais et al. 2021.
- Smith, C.E. – see Lorch et al. 2016.

- Solberg, L.M. – see Cordero et al. 2024.
- Southwick, C. – see Marsh et al. 2017.
- Spaid, S.M., D.J. Brown, J.L. Mota, A.F. Badje, G.E. Crozier, C.N. Lapin, Y.M. Lee, R.A. Moen, and J.W. Tamplin. 2025. Projected contemporary habitat distribution and quality for wood turtles in the midwestern United States. *Journal of Wildlife Management* 89:e70108.
- Spear, M.J., A.K. Elgin, and E.K. Grey. 2018. Current and projected distribution of the red-eared slider turtle, *Trachemys scripta elegans*, in the Great Lakes Basin. *American Midland Naturalist* 179(2):191-221.
- Spellman, G.M. – see Blais et al. 2021.
- Staffen, A.D., and R.A. Staffen. 2020. Geographic distribution: *Pituophis catenifer* (Gophersnake). *Herpetological Review* 51(1):81. (Lafayette Co.)
- Staffen, R.A. – see Badje and Staffen 2021, Bougie et al. 2023, Carlson et al. 2023, Kapfer and Staffen 2022, Lorch et al. 2016, Mertig et al. 2019, Paloski et al. 2018, Staffen and Staffen 2020, White et al. 2020a, and White et al. 2020b.
- Staffen, R.A. 2023. Geographic distribution: *Plethodon cinereus* (Eastern Red-backed Salamander). *Herpetological Review* 54(1):67-68.
- Staffen, R.A., and J.M. Lorch. 2022. Eastern ribbonsnake, *Thamnophis saurita* (Linnaeus 1766), western ribbonsnake, *Thamnophis proximus* (Say 1823), Pp. 633-651 In J.M. Kapfer and D.J. Brown (eds.). *Amphibians and Reptiles of Wisconsin*. University of Wisconsin Press, Madison.
- Staffen, R.A., and R.A. Paloski. 2017a. Geographic distribution: *Coluber constrictor* (North American Racer). *Herpetological Review* 48(1):127. (Rock Co.)
- Staffen, R.A., and R.A. Paloski. 2017b. Geographic distribution: *Hemidactylium scutatum* (Four-toed Salamander). *Herpetological Review* 48(4):805. (Adams Co.)
- Staggs, J., D. Brown, A. Badje, and R. Moen. 2023. Wood turtle (*Glyptemys insculpta*) abundance-habitat relationships in the Laurentian Mixed Forest Province of Wisconsin and Minnesota. P. 20 In J.R. Meck, M.T. Jones, T.S.B. Akre, A. Badje, et al. (eds.). 2023. Abstracts from the 3rd Emydine Conservation Symposium, Huntingdon, PA. July 10–12, 2023. American Turtle Observatory, New Salem, MA.
- Staggs, J.M. – see Badje et al. 2023, Badje et al. 2024, and Beard et al. 2024.
- Staggs, J.M. 2023. Abundance-habitat relationships and aquatic-terrestrial habitat selection patterns for wood turtles (*Glyptemys insculpta*) in the Upper Midwest. M.S. thesis. West Virginia University, Morgantown, WV.
- Staggs, J.M., D.J. Brown, A.F. Badje, J.T. Anderson, L.V. Carlson, C.N. Lapin, M.M. Cochrane, and R.A. Moen. 2024. Influences of aquatic and terrestrial habitat characteristics on abundance patterns of adult wood turtles. *Journal of Wildlife Management* 88:e22589.
- Staggs, J.M., D.J. Brown, M.M. Cochrane, A.F. Badje, and R.A. Moen. 2025. Influences of temperature and time on habitat use patterns of a semi-aquatic turtle. *Ecology and Evolution* 15:e72301.
- Stahley, M. 2023. A monitoring plan to assess the ecological benefits of Kinnickinnic River dam removal and river restoration in River Falls, Wisconsin. Section 4: Riparian biology monitoring. Kinni Corridor Collaborative, River Falls, WI. (Includes protocols for monitoring frogs, snakes, and turtles.)
- Stajich, J.E. – see Ladner et al. 2022.
- Stallings, S. - see Petersen et al. 2018.
- Standish, I., E. Leis, N. Schmitz, J. Credico, S. Erickson, J. Bailey, J. Kerby, K. Phillips, and T. Lewis. 2018a. Optimizing, validating, and field testing a multiplex qPCR for the detection of amphibian pathogens. *Diseases of Aquatic Organisms* 129:1–13.

- Standish, I., E. Leis, L. Zinnel, N. Schmitz, and J. Creedico. 2018b. The Identification of *Janthinobacterium lividum* on Wisconsin, USA Amphibians. *Herpetological Review* 69(3):473-479.
- Stasiek, J., and B.A. Reinke. 2025. Coloration is highly variable but is not always an honest signal in the painted turtle, *Chrysemys picta*. *Canadian Journal of Zoology* 103:1-10.
- Stearrett, N. – see Marsh et al. 2017.
- Steele, A. – see Edwards et al. 2017.
- Steen, D.A. – see Lambert and Steen 2019.
- Stegmann, E.A. 2020. Habitat selection and host detection in the salamander mussel, *Simpsonaias ambigua*. M.S. thesis. Missouri State University, Springfield, MO.
- Steijn, N. – see Marsh et al. 2017.
- Steinle, C. – see Harrison and Steinle 2020.
- Stengle, A.G. – see Ladner et al. 2022.
- Stetzer, C. – see Paisley et al. 2024.
- Stevenson, A.T., and A.F. Badje. 2017. Geographic distribution: *Lithobates catesbeianus* (American Bullfrog). *Herpetological Review* 48(2):384. (Juneau and Wood Cos.)
- Stevenson, A.T., S. Lee, A. Greuel, and A.F. Badje. 2017. Geographic distribution: *Lithobates catesbeianus* (American Bullfrog). *Herpetological Review* 48(3):585. (Portage Co.)
- Stevenson, K.P. – see Theler et al. 2016.
- Stiles, F. – see Kiebler et al. 2020.
- Stiles, R.M. – see Klemish et al. 2022.
- Stoker, J. – see Sadinski et al. 2018.
- Stratman, K. – see Feagles et al. 2022.
- Stratman, K., and G. Höbel. 2018. Female *Hyla versicolor* often unable to detect call variation among neighboring males. P. 26 In 2017 *Field Station Annual Report*. University of Wisconsin-Milwaukee, Milwaukee.
- Stratman, K., and G. Höbel. 2019a. Individual variation in multivariate signal assessment in *Hyla versicolor* females. P. 24 In 2018 *Field Station Annual Report*. University of Wisconsin-Milwaukee, Milwaukee.
- Stratman, K., and G. Höbel. 2020. A bivariate exploration of among-female variation in mate preference functions (*Hyla versicolor*). P. 31 In 2019 *Field Station Annual Report*. University of Wisconsin-Milwaukee, Milwaukee.
- Stratman, K., E. Oldehoeft and G. Höbel. 2021. Woe is the loner: Female frogs prefer to have options even if it means rejecting an isolated “hotshot.” P. 28 In 2020 *Field Station Annual Report*. University of Wisconsin-Milwaukee, Milwaukee.
- Stratman, K., E. Oldehoeft and G. Höbel. 2022. Woe is the loner: Female frogs prefer to have options even if it means rejecting an isolated “hotshot.” P. 33 In 2021 *Field Station Annual Report*. University of Wisconsin-Milwaukee, Milwaukee.
- Stratman, K.D., and G. Höbel. 2019b. Opportunity for female choice in the wild is frequently curtailed by low male trait variation in *Hyla versicolor*. *Behavioral Ecology and Sociobiology* 73(5):59.1-59.12.
- Stratman, K.D., E.A. Oldehoeft and G. Höbel. 2021. Woe is the loner: Female treefrogs prefer clusters of displaying males over single “hotshot” males. *Evolution* 75:3,026-3,036.
- Strobel, S.M., E.K. Fischer, and M.C. Womack. 2025. Consequences of developmental and growth-rate plasticity within and across life stages in wood frogs (*Rana sylvatica*). *Royal Society Open Science* 12:250202. (Study organisms were collected as eggs in Wisconsin.)

- Struecker, B.P., and J.R. Milanovich. 2017. Predicted suitable habitat declines for Midwestern United States amphibians under future climate change and land-use change scenarios. *Herpetological Conservation and Biology* 12(3):635–654.
- Stuart-Fox, D. – see Reinke et al. 2017.
- Sturtevant, B.R. – see Raschke et al. 2019.
- Sutton, S. – see Hileman et al. 2017.
- Swan, J.W. – see Klemish et al. 2022.
- Symes, L. – see Höbel and Symes 2016.
- Tall, C., and K.A. Kahler. 2019. Masters of Mother Nature. *Wisconsin Natural Resources Magazine* 43(4):4-11. (Includes natural history information on overwintering frogs and turtles.)
- Tamplin, J. – see Brown et al. 2025.
- Tamplin, J.W. – see Lapin et al. 2019, and Spaid et al. 2025.
- Tasleem, M. – see Marsh et al. 2017.
- Taylor, J.M. – see Marsh et al. 2017.
- Tellez, M. – see Keenan and Tellez 2016.
- Theler, J.L., S. Chalkley-Hubbell, H.A. Semken, Jr., and K.P. Stevenson. 2016. Faunal remains from Preston Rockshelter (47GT157), Grant County, Wisconsin. *Wisconsin Archeologist* 97(1):5–46.
- Thiel, R.P. – see Byer et al. 2020, Reid et al. 2016, and Reid et al. 2016.
- Thogmartin, W.E. – see Hamilton et al. 2018.
- Thompson, D. – see Ready et al. 2025.
- Thompson, K.L. – see Fitzpatrick et al. 2019.
- Thompson, N.E., E.W. Lankau, and G.M. Rogall. 2018. Snake fungal disease in North America: U.S. Geological Survey updates. Fact Sheet 2017–3064. National Wildlife Health Center, U.S. Geological Survey, Madison, WI.
- Thomsen, E. – see Raimond and Thomsen 2016.
- Tkach, V.V. – see Scholz et al. 2023.
- Tolar, B. – see Walters et al. 2016.
- Tornabene, B.J. – see Kain et al. 2025.
- Tozer, D.C., A.M. Bracey, V.J. Brady, M.F. Chislock, J.J. Ciborowski, M.J. Cooper, G.E. Fiorino, T.M. Gehring, E.E. Gnass Giese, G.P. Grabas, A. Harrison, R.W. Howe, G.A. Lamberti, G.J. Lawrence, G.J. Niemi, D.J. Uzarski, B.A. Wheelock, and D.M. Ethier. 2025. Occurrence patterns and trends of frogs in coastal wetlands of the Great Lakes call for further habitat restoration. *Ecosphere* 16:e70248.
- Trees, E. – see Walters et al. 2016.
- Tsao, J.I. – see Ginsberg et al. 2020.
- Underhill, V. – see Robertson et al. 2017.
- Underhill, V. 2018. Influence of natural and anthropogenic light levels on female preferences in eastern gray treefrogs (*Hyla versicolor*). M.S. thesis. University of Wisconsin-Milwaukee, Milwaukee.
- Underhill, V. 2019. Influence of natural and anthropogenic light levels on female preferences in eastern gray treefrogs (*Hyla versicolor*). P. 23-24 In 2018 Field Station Annual Report. University of Wisconsin-Milwaukee, Milwaukee.

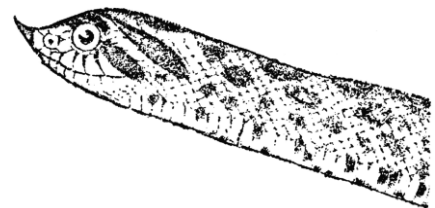
- Underhill, V., and G. Höbel. 2017a. Variation in ambient light levels does not alter mate choice behavior in female gray treefrogs (*Hyla versicolor*). P. 33 In *2016 Field Station Annual Report*. University of Wisconsin-Milwaukee, Milwaukee.
- Underhill, V., and G. Höbel. 2017b. Moonlighting? Lunar effects on reproductive activity of eastern gray treefrogs (*Hyla versicolor*). P. 33 In *2016 Field Station Annual Report*. University of Wisconsin-Milwaukee, Milwaukee.
- Underhill, V., and G. Höbel. 2017c. Variation in nocturnal light levels does not alter mate choice behavior in female eastern gray treefrogs (*Hyla versicolor*). *Behavioral Ecology and Sociobiology* 71(10, Article 151):1-12.
- Underhill, V., and G. Höbel. 2018a. Mate choice behavior of female eastern gray treefrogs (*Hyla versicolor*) is robust to anthropogenic light pollution. P. 26 In *2017 Field Station Annual Report*. University of Wisconsin-Milwaukee, Milwaukee.
- Underhill, V.A., and G. Höbel. 2018b. Mate choice behavior of female eastern gray treefrogs (*Hyla versicolor*) is robust to anthropogenic light pollution. *Ethology* 124:537-548.
- Underhill, V., and G. Höbel. 2018c. Moonlighting? Consequences of lunar cues on anuran reproductive activity. *Acta Oecologica* 87:20-28.
- Unmuth, J. – see Marshall et al. 2021.
- Urban, R.A. – see Bowne et al. 2018.
- Urbanek, R.A., G.A. Glowacki, and C.K. Nielsen. 2016. Effect of raccoon (*Procyon lotor*) reduction on Blanding's turtle (*Emydoidea blandingii*) nest success. *Journal of North American Herpetology* 2016(1):39-44.
- Urquhart, J. – see Davy et al. 2021.
- Uzarski, D.G. – see Tozer et al. 2025.
- VanDeWalle, T.J. – see Hileman et al. 2017.
- VanDeWalle, T.J. 2023. Book review: *Amphibians and Reptiles of Wisconsin*. *Herpetological Review* 54(1):149-151.
- Van Grinsven, D. 2020. Readers write: Earth Day, yes, but snakes – not so much. *Wisconsin Natural Resources Magazine* 44(2):29. (The letter writer expresses a fear of snakes.)
- VanZile, K. – see Walters et al. 2016.
- Viernum, S.E. – see Badje et al. 2022, and Paloski et al. 2022.
- Vogt, R.C. – see Geller et al. 2020, and Lindeman and Vogt 2024.
- Vogt, R.C. 2018. *Graptemys ouachitensis* Cagle 1953 – Ouachita map turtle. In A.G.J. Rhodin, J.B. Iverson, P.P. van Dijk, K.A. Buhlmann, P.C.H. Pritchard, and R.A. Mittermeier (eds.). Conservation Biology of Freshwater Turtles and Tortoises: A Compilation Project of the IUCN/SSC Tortoise and Freshwater Turtle Specialist Group. *Chelonian Research Monographs* 5(11):103.1-103.13.
- Vogt, R.C., G. Bulté, and J.B. Iverson. 2018. *Graptemys geographica* (LeSueur 1817) – Northern map turtle, common map turtle. In A.G.J. Rhodin, J.B. Iverson, P.P. van Dijk, K.A. Buhlmann, P.C.H. Pritchard, and R.A. Mittermeier (eds.). Conservation Biology of Freshwater Turtles and Tortoises: A Compilation Project of the IUCN/SSC Tortoise and Freshwater Turtle Specialist Group. *Chelonian Research Monographs* 5(11):104.1–104.18.
- Vogt, R.C. 2022a. Northern map turtle, *Graptemys geographica* (Le Sueur 1817). Pp. 784-793 In J.M. Kapfer and D.J. Brown (eds.). *Amphibians and Reptiles of Wisconsin*. University of Wisconsin Press, Madison.
- Vogt, R.C. 2022b. Ouachita map turtle, *Graptemys ouachitensis* (Cagle 1953). Pp. 794-803 In J.M. Kapfer and D.J. Brown (eds.). *Amphibians and Reptiles of Wisconsin*. University of Wisconsin Press, Madison.

- Vogt, R.C. 2022c. False map turtle, *Graptemys pseudogeographica* (Gray 1831). Pp. 804-813 In J.M. Kapfer and D.J. Brown (eds.). *Amphibians and Reptiles of Wisconsin*. University of Wisconsin Press, Madison.
- Vogt, R.C., and J.M. Kapfer. 2016. Geographic distribution: *Graptemys ouachitensis* (Ouachita Map Turtle). *Herpetological Review* 47(3):422. (Pepin Co.)
- Vonesh, J.R. – see Marsh et al. 2017.
- Vraniak, D.A., and G.A. Geller. 2017. Natural history notes: *Apalone spinifera* (Spiny Softshell), *Chelydra serpentina* (Snapping Turtle), and *Glyptemys insculpta* (Wood Turtle). Embryo survival after nest flooding. *Herpetological Review* 48(2):419-420.
- Vraniak, D.A., C.N. Lapin, and T. Bougie. 2017. Natural history notes: *Glyptemys insculpta* (Wood Turtle). Nest predation. *Herpetological Review* 48(2):424-425.
- Waddle, J.H. – see Kain et al. 2025.
- Waagner, S. – see Hughes et al. 2023.
- Walls, S.C. – see Kain et al. 2025.
- Walters, M.S., L. Simmons, T.C. Anderson, J. DeMent, K. Van Zile, L.P. Matthias, S. Etheridge, R. Baker, C. Healan, R. Bagby, R. Reporter, A. Kimura, C. Harrison, K. Ajileye, J. Borders, K. Crocker, A. Smee, M. Adams-Cameron, L.A. Joseph, B. Tolar, E. Trees, A. Sabol, N. Garrett, C. Bopp, S. Bosch, and C.B. Behravesh. 2016. Outbreaks of Salmonellosis from small turtles. *Pediatrics*. 137(1):e20151735.
- Warner, H. – see Cannizzaro et al. 2023.
- Warren, D.E., and D.C. Jackson. 2017. The metabolic consequences of repeated anoxic stress in the western painted turtle, *Chrysemys picta bellii*. *Comparative Biochemistry and Physiology, Part A: Molecular & Integrative Physiology* 203:1-8.
- Watermolen, D.J. – see Cannizzaro et al. 2021, Macklin and Watermolen 2024, Mann and Watermolen 2021, Sajdak and Watermolen 2022, and Seiders and Watermolen 2022.
- Watermolen, D.J. 2016. In memoriam: Randy 'The Frog Guy' Korb. *Bulletin of the Chicago Herpetological Society* 51(1):20-21.
- Watermolen, D.J. 2017a. Some unreported trematodes from Wisconsin leopard frogs. *Bulletin of the Chicago Herpetological Society* 52(5):85-86.
- Watermolen, D.J. 2017b. There's love in the air: Join the frog chorus in Wisconsin's wetlands. Wisconsin Wetlands Association *Wisconsin Wetlands: A Quarterly Publication* 1:4-5.
- Watermolen, D.J. 2018a. Additional mudpuppy (*Necturus maculosus*) records from fisheries assessment surveys conducted in Wisconsin. *Bulletin of the Chicago Herpetological Society* 53(3):57-60.
- Watermolen, D.J. 2018b. Geographic distribution: *Necturus maculosus* (Mudpuppy). *Herpetological Review* 49(4):705. (Oconto Co.)
- Watermolen, D.J. 2018c. There's love in the air: Join the frog chorus in Wisconsin's wetlands. Wisconsin Woodland Owners Association *Wisconsin Woodlands* 39(1):16-17.
- Watermolen, D.J. 2019. Crustacean ectoparasites of amphibians. *Bulletin of the Chicago Herpetological Society* 54(4):85-91.
- Watermolen, D.J. 2020a. Additional notes on mudpuppy (*Necturus maculosus*) habitats in northeastern Wisconsin. *Bulletin of the Chicago Herpetological Society* 55(9):175-177.
- Watermolen, D.J. 2020b. Historical reports of mudpuppies (*Necturus maculosus*) from Wisconsin newspapers: Fake news or valuable insights? *Bulletin of the Chicago Herpetological Society* 55(7):141-146.
- Watermolen, D.J. 2020c. American crows scavenge green frog carcasses. *Bulletin of the Chicago Herpetological Society* 55(6):120.

- Watermolen, D.J. 2021a. Possible cases of phoresy involving leeches and painted turtles. *Bulletin of the Chicago Herpetological Society* 56(1):1-2.
- Watermolen, D.J. 2021b. Book review: *Field Guide to Amphibian Eggs and Larvae of the Western Great Lakes* by G.S. Casper, T.G. Anton, and R.D. Rutherford. *Bulletin of the Chicago Herpetological Society* 56(7):109.
- Watermolen, D.J. 2022a. Herpetological sculpture at the Henry Vias Zoo, Madison, Wisconsin. *Bulletin of the Chicago Herpetological Society* 57(8):145-146.
- Watermolen, D.J. 2022b. A probable case of Sandhill Crane predation on a northern water snake. *Bulletin of the Chicago Herpetological Society* 57(9):172-173.
- Watermolen, D.J. 2022c. Pickerel frog, *Lithobates palustris* (LeConte, 1825). Pp. 255-267 In J.M. Kapfer and D.J. Brown (eds.). *Amphibians and Reptiles of Wisconsin*. University of Wisconsin Press, Madison.
- Watermolen, D.J. 2022.d Red-bellied snake, *Storeria occipitomaculata* (Storer, 1839). Pp. 600-609 In J.M. Kapfer and D.J. Brown (eds.). *Amphibians and Reptiles of Wisconsin*. University of Wisconsin Press, Madison.
- Watkins-Colwell, G.J. – see MacGuigan et al. 2022.
- Watson, J. – see Badje et al. 2020.
- Watson, J., R.A. Paloski, J. Karow, G. Jensen, J. Robaidek, and A.F. Badje. 2020. Geographic distribution: *Graptemys geographica* (Northern Map Turtle). *Herpetological Review* 51(1):73. (Adams Co.)
- Watters, K.C. 2018. Community structure and epizootic infection prevalence of northern Wisconsin anurans. M.S. thesis. Wright State University, Fairborn, OH.
- Weatherhead, P.J. – see Hileman et al. 2017.
- Weber, K. – see Casper and Weber 2018, and Casper and Weber 2019.
- Wehse, R. – see Carlson et al. 2023.
- Wellehan, J.F.X., Jr. – see Lorch et al. 2016, and Ready et al. 2025.
- Wergeland, R.M. – see Ray et al. 2024.
- Werner, L.C., II – see Fitzpatrick et al. 2019.
- Wetzel, J.F. – see Paisley et al. 2024.
- Wheelock, B.A. – see Tozer et al. 2025.
- White, J.P., H.M. Kaarakka, R.A. Staffen, J.E. Krumrie, M.G. Geary, M. Hereema, and A.F. Badje. 2020a. Geographic distribution: *Plestiodon septentrionalis* (Prairie Skink). *Herpetological Review* 51(4):777-778. (Pepin Co.)
- White, J.P., H.M. Kaarakka, R.A. Staffen, J.E. Krumrie, M.G. Geary, M. Hereema, and A.F. Badje. 2020b. Geographic distribution: *Heterodon platirhinos* (Eastern Hog-nosed Snake). *Herpetological Review* 51(4):781. (Pepin Co.)
- Wikston, C.M. – see Wikston and Wikston 2024a, and Wikston and Wikston 2024b.
- Wikston, M. – see Kolhoff et al. 2024, Pauly-Hubbard and Wikston 2024, and Pittsley and Wikston 2025.
- Wikston, M., and C.M. Wikston. 2024a. Geographic distribution: *Dryophytes chrysoscelis* (Cope's Gray Treefrog). *Herpetological Review* 55(4):516. (Dodge Co.)
- Wikston, M., and C.M. Wikston. 2024b. Geographic distribution: *Dryophytes versicolor* (Gray Treefrog). *Herpetological Review* 55(4):517. (Dodge Co.)
- Wild, E.R. – see Breitenbach, et al. 2020, Breitenbach and Wild 2016a, Breitenbach and Wild 2016b, Judziewicz and Wild. 2022, Lorch et al. 2016, and Schindler et al. 2024.
- Wild, E.R. 2016a. Geographic distribution: *Hemidactylum scutatum* (Four-toed Salamander). *Herpetological Review* 47(2):245. (Barron and Monroe Cos.)

- Wild, E.R. 2016b. Geographic distribution: *Plethodon cinereus* (Eastern Red-backed Salamander). *Herpetological Review* 47(2):246. (Barron Co.)
- Wild, E.R. 2016c. Geographic distribution: *Plethodon cinereus* (Eastern Red-backed Salamander). *Herpetological Review* 47(4):621. (Pepin Co.)
- Wild, E.R. 2022. Geographic distribution: *Hemidactylum scutatum* (Four-toed Salamander). *Herpetological Review* 53(4):625. (Brunett Co.)
- Wild, E.R., and D.J. Brown. 2022. Four-toed salamander, *Hemidactylum scutatum* (Temminck 1838). Pp. 344-354 In J.M. Kapfer and D.J. Brown (eds.). *Amphibians and Reptiles of Wisconsin*. University of Wisconsin Press, Madison.
- Wild, E.R., and T. Gamble. 2022. Systematics and classification. Pp. 7-10 In J.M. Kapfer and D.J. Brown (eds.). *Amphibians and Reptiles of Wisconsin*. University of Wisconsin Press, Madison.
- Wild, E.R., and R.A. Paloski. 2022. Geographic distribution: *Graptemys geographica* (Northern Map Turtle). *Herpetological Review* 53(3):441. (Dunn Co.)
- Wild, E.R., and S.R. Siddons. 2022. The gray treefrog complex in Wisconsin. Pp. 177-179 In J.M. Kapfer and D.J. Brown (eds.). *Amphibians and Reptiles of Wisconsin*. University of Wisconsin Press, Madison.
- Willey, L. – see Jordan et al. 2024.
- Willey, L.L. – see Jones et al. 2024, and Jones and Willey 2021.
- Wilson, L., W. Gibbons, and J. Mitchell. 2024. *Salamanders of the Eastern United States*. University of Georgia Press, Athens, GA.
- Winnett-Murray, K. – see Bowne et al. 2018.
- Winter, J.M., L. Mumm, L.A. Adamovicz, K.E. Andersson, G.A. Glowacki, and M.C. Allender. 2020. Characterizing the epidemiology of historic and novel pathogens in Blanding's turtles (*Emydoidea blandingii*). *Journal of Zoo and Wildlife Medicine* 51(3):606-617.
- Wisconsin Department of Natural Resources. 2016. *Wisconsin Wood Turtle (Glyptemys insculpta) Status Assessment and Conservation Strategy*. PUB NH-935 2016. Wisconsin Department of Natural Resources, Madison.
- Wolf, A.T. – see Howe et al. 2016.
- Womack, M.C. – see Strobel et al. 2025.
- Woodford, J.E. – see Bougie et al. 2020, Bougie, et al. 2022, Bougie et al. 2023, and Lapin et al. 2019.
- Wu, S.C., and E.A. Bergey. 2017. Diatoms on the carapace of common snapping turtles: *Luticola* spp. dominate despite spatial variation in assemblages. *PLoS ONE* 12(2):e0171910.
- Wynn, D. – see Hileman et al. 2017.
- Yagi, A. – see Hileman et al. 2017.
- Yahn, J. – see Kohl and Yahn 2016.
- Yahn, J.M. – see Brown et al. 2021, and Gleason et al. 2016.
- Yahn, J.M. 2016. Tadpoles, temperatures, and toxicants: Understanding patterns of growth and development in an era of warming climate and persistent organic pollutants. Ph.D. dissertation. University of Wisconsin, Madison.
- Yahn, J.M., and W.H. Karasov. 2021. The effects of dietary polybrominated diphenyl ether exposure and rearing temperature on tadpole growth, development, and their underlying processes. *Environmental Toxicology and Chemistry* 40(11):3,181-3,192.

- Zani, P.A. 2019. Tunnel vision. *Wisconsin Natural Resources Magazine* 41(6):7-10. (Includes information on development of underpasses for roads to aid turtle crossings.)
- Zenk, W. 2017. The effects of eutrophication on the green frog populations in Wisconsin. B.A. thesis. Carthage College, Kenosha, WI.
- Ziesmer, J.H. 2019. Geographic distribution: *Sternotherus odoratus* (Common Musk Turtle). *Herpetological Review* 50(1):101. (Outagamie Co.)
- Zimmermann, C.R. – see Bowne et al. 2018.
- Zinnel, L – see Standish et al. 2018b.
- Zuckerberg, B. – see Fitzpatrick et al. 2019, and Fitzpatrick et al. 2020.



Drawing from Charles C. Abbott's *Cyclopedia of Natural History* (New York: A. L. Burt, 1888) via ClipArt ETC.

5. Addendum: Publications Omitted from Previous Compilations

This section includes works that were inadvertently omitted from previous bibliographical compilations. These works mostly appeared in print prior to 2000, primarily between publication of my 1992 and 2001-2010 bibliographies². As in the previous section of this report, junior authors appear alphabetically and are cross-referenced to senior authors in this section.

Amato, M.L. 2006. Phylogeography of *Glaptemys insculpta* in relation to general herpetofaunal distribution patterns in eastern North America. M.S. thesis. University of Guelph, Guelph, Ontario.

Amrhein, J.F. – see Watermolen and Amrhein 1995.

Anonymous. 2018. The great frog invasion of 1952. Wisconsin Historical Society *Columns* (February-April):4.

Apodaca, J.J. – see Cosentino et al. 2014.

Bates, C. – see Cosentino et al. 2014.

Beach, J. – see Cosentino et al. 2014.

Beard, K.H. – see Cosentino et al. 2014.

Becklin, K. – see Cosentino et al. 2014.

Begley, J.S. – see Huijser and Begley 2015.

Bell, J.M. – see Cosentino et al. 2014.

Berwick, D.E. 1975. Analysis of the vertebrate fauna of Lawrence I Rockshelter (Ve-154), Vernon County, Wisconsin. M.A. thesis. University of Wisconsin, Madison. (Includes records of turtle remains.)

Blahnik, J.F., and P.A. Cochran. 1994. Geographic distribution: *Opheodrys vernalis*. *Herpetological Review* 25(2):77. (Door County: Chambers Island).

Bolek, M.G. 1997a. Geographic distribution: *Hyla chrysoscelis*. (Cope's Gray Treefrog). *Herpetological Review* 28(2):93. (Waukesha Co.).

Bolek, M.G. 1997b. Geographic distribution: *Graptemys geographica*. (Common Map Turtle). *Herpetological Review* 28(2):94. (Kenosha Co.).

Brodman, R. 1998. Biogeography of Midwestern amphibians. Pp. 24-30 In M.J. Lannoo (ed.). *Status and Conservation of Midwestern Amphibians*. University of Iowa Press, Iowa City, IA.

Bullock, G.L. – see Wolf et al. 1968, and Wolf et al. 1969.

Came, P.E. – see Granoff et al. 1965.

Canfield, M.E. – see Evrard and Canfield 2000.

Carpenter, A. 1996. Sun seekers: Painted turtles soak up the rays on bright summer days. *Wisconsin Natural Resources Magazine* 20(3):2, 29.

Cary, T.L. – see Kohl et al. 2015.

² Watermolen, D.J. 1992. Wisconsin herpetology: A bibliographical update with taxonomic, subject and geographic indices. Wisconsin Endangered Resources Report 87:1-15. Bureau of Endangered Resources, Wisconsin Department of Natural Resources, Madison.

Watermolen, D.J. 2013. *Wisconsin Herpetology, 2001-2010*. Miscellaneous Publication PUB-SS-1127. Bureau of Science Services, Wisconsin Department of Natural Resources, Madison.

- Cary, T.L. M.E. Ortiz-Santaliestra, and W.H. Karasov. 2014. Immunomodulation in post-metamorphic northern leopard frogs, *Lithobates pipiens*, following larval exposure to polybrominated diphenyl ether. *Environmental Science & Technology* 48(10):5,910-5,919. (Embryos of study specimens were acquired from a Wisconsin-based firm.)
- Casper, G.S. – see Watermolen and Casper 1993.
- Casper, G.S. 1996a. Geographic distribution: *Ambystoma maculatum* (Spotted Salamander). *Herpetological Review* 27(4):208. (Douglas Co.)
- Casper, G.S. 1996b. Geographic distribution: *Hemidactylium scutatum* (Four-toed Salamander). *Herpetological Review* 27(4):208. (Douglas Co.)
- Casper, G.S. 1996c. Geographic distribution: *Opheodrys vernalis* (Smooth Green Snake). *Herpetological Review* 27(4):214. (Green Co.)
- Casper, G.S. 1996d. *Geographic Distributions of the Amphibians and Reptiles of Wisconsin*. Milwaukee Public Museum, Milwaukee, WI. 87 p.
- Casper, G.S. 1997a. Geographic distribution: *Ambystoma laterale* (Blue-spotted Salamander). *Herpetological Review* 28(1):47. (Menominee Co.)
- Casper, G.S. 1997b. Geographic distribution: *Pseudacris triseriata triseriata* (Western Chorus Frog). *Herpetological Review* 28(1):48-49. (Oneida Co.)
- Casper, G.S. 1997c. Geographic distribution: *Graptemys geographica* (Common Map Turtle). *Herpetological Review* 28(1):49. (Shawano Co.)
- Casper, G.S. 1997d. Geographic distribution: *Sternotherus odoratus* (Common Musk Turtle). *Herpetological Review* 28(4):209. (La Crosse Co.)
- Casper, G.S. 1997e. Recent amphibian and reptile distribution records for Wisconsin. *Herpetological Review* 28(4):214-216.
- Casper, G.S. 1998. Review of the status of Wisconsin amphibians. Pp. 199-205 In M.J. Lannoo (ed.). *Status and Conservation of Midwestern Amphibians*. University of Iowa Press, Iowa City, IA.
- Casper, G.S. 1999a. Geographic distribution: *Ambystoma tigrinum* (Eastern Tiger Salamander). *Herpetological Review* 30(1):49. (Marquette Co.)
- Casper, G.S. 1999b. New distribution records from the Wisconsin Herpetological Atlas Project, 1998. *Herpetological Review* 30(3):181-182.
- Casper, G.S. and S. Ames. 1998. Geographic distribution: *Heterodon platyrhinos* (Eastern Hognose Snake). *Herpetological Review* 29(1):53. (Ashland Co.)
- Chabot, A. 1996. Preliminary results from the Marsh Monitoring Program in 1995. *Great Lakes Wetlands* 7(1):7-11.
- Christoffel, R., and R. Hay. 1995. The effectiveness of placing turtle mortality barriers and crossing signs along highways to reduce turtle mortality. *Wisconsin Endangered Resources Report* (107):1-9. Wisconsin Department of Natural Resources, Madison.
- Christoffel, R.A., and R. Hay. 1997. 1994 census of Blanchard's cricket frog (*Acris crepitans blanchardi*) in southwestern WI. *Wisconsin Endangered Resources Report* (110):1-8. Wisconsin Department of Natural Resources, Madison.
- Cochran, P.A. – see Blahnik and Cochran 1994.
- Cochran, P.A. 1994. Geographic distribution: *Apalone spinifera* (Spiny Softshell). *Herpetological Review* 25(2):75. (Brown Co.)
- Cochran, P.A. 1994. A longevity record for the eastern hognose snake (*Heterodon platyrhinos*). *Bulletin of the Chicago Herpetological Society* 29(6):117-118.
- Cochran, P.A. 1998. Early herpetological observations by a northeastern Wisconsin conservationist. *Bulletin of the Chicago Herpetological Society* 33(4):73-74.
-

- Cochran, P.A. 2001. Annotated geographic records for some amphibians and reptiles in Wisconsin. *Bulletin of the Chicago Herpetological Society* 36(11):217-218.
- Cooney, B. 1996. Habitat fragmentation may hasten spring peepers' disappearance. University of Wisconsin School of Natural Resources *Natural Resources Report* 7(3):6-7.
- Cosentino, B.J., D.M. Marsh, K.S. Jones, J.J. Apodaca, C. Bates, J. Beach, K.H. Beard, K. Becklin, J.M. Bell, C. Crockett, G. Fawson, J. Fjelsted, E.A. Forys, K.S. Genet, M. Grover, J. Holmes, K. Indeck, N.E. Karraker, E.S. Kilpatrick, T.A. Langen. S.G. Mugal, A. Molina, J.R. Vonesh, R.J. Weaver, and A. Willey. 2014. Citizen science reveals widespread negative effects of roads on amphibian distributions. *Biological Conservation* 180:31-38.
- Crockett, C. – see Cosentino et al. 2014.
- Danou, C.H. 1997. Habitat use and movement patterns of the eastern massasauga rattlesnake in Wisconsin. M.S. thesis. University of Wisconsin-Stevens Point, Stevens Point.
- Dearing, M.D. – see Kohl et al. 2015.
- Dhuey, B.J. – see Mossman et al. 1998.
- Dodd, C.K., Jr. 2013. A bibliography of the anurans of the United States and Canada (1734-2012). *Herpetological Conservation and Biology* 8(Monograph 4):1-202.
- Doerscheln, R. – see Petzing et al. 1998.
- Dunbar, C.E. – see Wolf et al. 1968, and Wolf et al. 1969.
- Dyer, W.G. 1991. Helminth parasites of amphibians from Illinois and adjacent Midwestern states. *Transactions of the Illinois State Academy of Sciences* 84(3&4):125-143.
- Evrard, J.O., and M.E. Canfield. 2000. Blanding's turtles in the Crex Meadows Wildlife Area. *Transactions of the Wisconsin Academy of Sciences, Arts, and Letters* 88:49-54.
- Evrard, J.O., and R.A. Lillie. 1996. Flora and fauna of northwest Wisconsin waterfowl production areas. *Transactions of the Wisconsin Academy of Sciences, Arts, and Letters* 84:69-101.
- Falck, M. 1997. Results of the 1997 Frog (Omakakii) and Toad (Obiigomakakii) Survey in the Ceded Territory of the Lake Superior Chippewa. *Administrative Report* 97-14. Great Lakes Indian Fish and Wildlife Commission, Odana, WI.
- Falck, M. 1999. Results of the 1998 Frog (Omakakii) and Toad (Obiigomakakii) Survey in the Ceded Territory of the Lake Superior Chippewa. *Administrative Report* 99-05. Great Lakes Indian Fish and Wildlife Commission, Odana, WI.
- Fawson, G. – see Cosentino et al. 2014.
- Fjelsted, J. – see Cosentino et al. 2014.
- Forys, E.A. – see Cosentino et al. 2014.
- Freitas, M.B., C.A. Tsai, and W.H. Karasov. 2015. Effects of environmentally relevant concentrations of polybrominated diphenyl ether (PBDE) on hormonal profiles of *Lithobates pipiens* during metamorphosis. *Integrative and Comparative Biology* 55 (Suppl. 1):E60.
- Genet, K.S. – see Cosentino et al. 2014.
- Gilbertson, H. – see Watermolen and Gilbertson 1996.
- Granoff, A., P.E. Came, and K.A. Rafferty, Jr. 1965. The isolation and properties of viruses from *Rana pipiens*: Their possible relationship to the renal adenocarcinoma of the leopard frog. *Annals of the New York Academy of Sciences* 126(1):237-55. (Study specimens were collected in Wisconsin.)

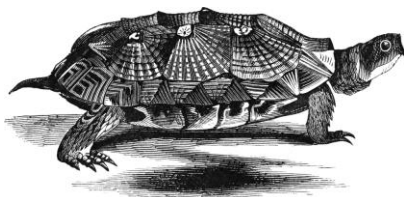
- Griffin, M.P.A., and D.J. Watermolen (eds.). 2004. *Wetland Restoration Handbook for Wisconsin Landowners*, 2nd ed. Miscellaneous Publication PUB-SS-989. Wisconsin Department of Natural Resources, Madison.
- Gritters, S.A., and L.M. Mauldin. 1994. Four years of turtle collections on Navigation Pool 13 of the Upper Mississippi River. Special Report 94-S010. Long Term Resource Monitoring Program National Biological Survey, Environmental Management Technical Center, Onalaska, WI.
- Grover, M. – see Cosentino et al. 2014.
- Harding, J.H. 1997. *Amphibians and Reptiles of the Great Lakes Region*. University of Michigan Press, Ann Arbor, MI.
- Hartman, L.M. – see Mossman et al. 1998.
- Hay, R. – see Christoffel and Hay 1995, and see Mossman et al. 1998.
- Hay, R. 1998. Blanchard's cricket frogs in Wisconsin: A status report. Pp. 79– 82 In M.J. Lannoo (ed.). *Status and Conservation of Midwestern Amphibians*. University of Iowa Press, Iowa City, IA.
- Heath, D.J. 1995. A preliminary survey for rare reptiles at selected Wisconsin Valley Improvement Company impoundment projects located in Wisconsin. Pp. 1-15 In D. Heath. Results of endangered resource surveys at Wisconsin Valley Improvement Projects located in northern Wisconsin. *Wisconsin Endangered Resources Report* (106):1-200. Wisconsin Department of Natural Resources, Madison.
- Hendricks, R.L., III. 2000. Geographic distribution: *Pseudacris crucifer* (Spring Peeper). *Herpetological Review* 31(4):251. (Kenosha Co.)
- Holman, J.A. 1998. Amphibian recolonization of Midwestern states in the postglacial Pleistocene. Pp. 19-15 In M.J. Lannoo (ed.). *Status and Conservation of Midwestern Amphibians*. University of Iowa Press, Iowa City, IA.
- Holmes, J. – see Cosentino et al. 2014.
- Huijser, M.P., and J.S. Begley. 2015. Wildlife mitigation plan State Hwy 49, Horicon Marsh, Wisconsin, USA. Report for U.S. Fish & Wildlife Service, Region 3, Bloomington, MN. Western Transportation Institute, College of Engineering, Montana State University, Bozeman, MT.
- Indeck, K. – see Cosentino et al. 2014.
- Janovy, J.J. – see Langford and Janovy 2009.
- Jones, K.S. – see Cosentino et al. 2014.
- Jones, M.B. 1992. Interactions between productivity and anuran larval growth in manipulated mesocosms. M.S. thesis. Univ. Wisconsin-Milwaukee, Milwaukee.
- Jung, R.E. 1993. Blanchard's cricket frog (*Acris crepitans blanchardi*) in southwest Wisconsin. *Transactions of the Wisconsin Academy of Sciences, Arts, and Letters* 81:79-87.
- Kapfer, J.M. 2011a. *Amphibian and Reptile Frequently Asked Questions – #1 General Questions*. PUB-ER-708. Bureau of Endangered Resources, Wisconsin Department of Natural Resources, Madison.
- Kapfer, J.M. 2011b. *Amphibian and Reptile Frequently Asked Questions – #2 Frogs*. PUB-ER-668. Bureau of Endangered Resources, Wisconsin Department of Natural Resources, Madison.

- Kapfer, J.M. 2011c. *Amphibian and Reptile Frequently Asked Questions – #3 Salamanders*. PUB-ER-669. Bureau of Endangered Resources, Wisconsin Department of Natural Resources, Madison.
- Kapfer, J.M. 2011d. *Amphibian and Reptile Frequently Asked Questions – #4 Snakes*. PUB-ER-670. Bureau of Endangered Resources, Wisconsin Department of Natural Resources, Madison.
- Kapfer, J.M. 2011e. *Amphibian and Reptile Frequently Asked Questions – #5 Turtles*. PUB-ER-671. Bureau of Endangered Resources, Wisconsin Department of Natural Resources, Madison.
- Kapfer, J.M. 2011f. *Amphibian and Reptile Frequently Asked Questions – #6 Lizards*. PUB-ER-672. Bureau of Endangered Resources, Wisconsin Department of Natural Resources, Madison.
- Karasov, W.T. – see Cary et al. 2014, Freitas et al. 2015, and Kohl et al. 2015.
- Karraker, N.E. – see Cosentino et al. 2014.
- Kilpatrick, E.S. – see Cosentino et al. 2014.
- Kohl, K.D., T.L. Cary, W.H. Karasov, and M.D. Dearing. 2015. Larval exposure to polychlorinated biphenyl 126 (PCB-126) causes persistent alteration of the amphibian gut microbiota. *Environmental Toxicology and Chemistry* 34(5):1,113-1,118. (Embryos of study specimens were acquired from a Wisconsin-based firm.)
- Kuzmin, Y., V.V. Tkach, and S.D. Snyder. 2003. The nematode genus *Rhabdias* (Nematoda: Rhabdiasidae) from amphibians and reptiles of the Nearctic. *Comparative Parasitology* 70(2):101-114.
- Langen, T.A. – see Cosentino et al. 2014.
- Langford, G.J., and J.J. Janovy, Jr. 2009. Comparative life cycles and life histories of North American *Rhabdias* spp. (Nematoda: Rhabdiasidae): lungworms from snakes and anurans. *Journal of Parasitology* 95(5):1,145-1,155. (Paper references *Rhabdias* specimens from Wisconsin hosts that were used for comparative purposes.)
- Lannoo, M.J. (ed.). 1998. *Status and Conservation of Midwestern Amphibians*. University of Iowa Press, Iowa City, IA.
- Lillie, R.A. – see Evrard and Lillie 1996.
- Long, C.A. 1993. Biogeography of the reptiles and amphibians of the Lake Michigan Isles. *Bulletin of the Chicago Herpetological Society* 28(10):214-218.
- Long, C.A. 1998. Notes on development and mortality in giant toads from Washington Island, Door County, Wisconsin. *Bulletin of the Chicago Herpetological Society* 33(8):161-164.
- Luthin, C.S. – see Thompson and Luthin 2004.
- MacDonald, C.A. (no date). Snakes in the Point Beach State Forest, all harmless. Privately published by the author. 32 pp.
- Marsh, D.M. – see Cosentino et al. 2014.
- Matson, T.O. 1990. A morphometric comparison of gray treefrogs, *Hyla chrysoscelis* and *H. versicolor*, from Ohio. *Ohio Journal of Science* 90(4):98-101. (Includes Wisconsin data.)
- Matty, R.P. 1996. Hog-nosed ham. *Wisconsin Natural Resources* 20(4):2, 29.
- Mauldin, L.M. – see Gritters and Mauldin 1994.
- Mierzwa, K.S. 1998. Amphibian habitat in the Midwestern United States. Pp. 16-23 In M.J. Lannoo (ed.). *Status and Conservation of Midwestern Amphibians*. University of Iowa Press, Iowa City, IA.
- Molina, S.G. – see Cosentino et al. 2014.

- Moore, B. 1993. 1992 ornate box turtle project results and recommendations. Wisconsin Department of Natural Resources *Wisconsin Endangered Resources Report* (96):1-8.
- Mossman, M., L.M. Hartman, R. Hay, J.R. Sauer, and B.J. Dhuey. 1998. Monitoring long-term trends in Wisconsin frog and toad populations. Pp. 169–198 *In* M.J. Lannoo (ed.). *Status and Conservation of Midwestern Amphibians*. University of Iowa Press, Iowa City, IA.
- Mugel, S.G. – see Cosentino et al. 2014.
- Olson, R.E. 1995. Important herpetological notes from northern Illinois and southern Wisconsin. *Bulletin of the Maryland Herpetological Society* 31(2):96.
- Ortiz-Santaliestra, M.E. – see Cary et al. 2014.
- Petranka, J.W. 1998. *Salamanders of the United States and Canada*. Smithsonian Institution Press, Washington, DC.
- Petzing, J.E., M.H. Sabaj, and R. Doerscheln. 1998. Geographic distribution: *Storeria dekayi* (Brown Snake). *Herpetological Review* 29(1):55. (Marquette Co.)
- Powell, R., J.T. Collins, and E.D. Hooper, Jr. 1998. *A Key to Amphibians and Reptiles of the Continental United States and Canada*. University of Kansas Press, Lawrence, KS.
- Price, S.J. 2000. Geographic distribution: *Hemidactylum scutatum* (Four-toed Salamander). *Herpetological Review* 31(4):249. (Door Co.)
- Quimby, M.C. – see Wolf et al. 1968, and Wolf et al. 1969.
- Rafferty, K.A., Jr. – see Granoff et al. 1965.
- Rennicke, J. 1996. A snake's tale. *Wisconsin Trails* (March/April):41-43.
- Sabaj, M.H. – see Petzing et al. 1998.
- Sauer, J.R. – see Mossman et al. 1998.
- Scalleta, J. – see Walley and Scalleta 2000.
- Shalaway, S. 1991. Let's go herping! Wisconsin Association for Environmental Education and Wisconsin Department of Natural Resources *EE News: Environmental Education in Wisconsin* (Summer):20.
- Snyder, S.D. – see Kuzmin et al. 2003.
- Staffen, R., B. Smith, and R. Paloski. 2015. Toughening it out when the temperatures drop. *Wisconsin Natural Resources Magazine* 39(1):4-5. (Includes information on frogs and snakes in the winter.)
- Thompson, A.L., and C.S. Luthin. 2004. *Wetland Restoration Handbook for Wisconsin Landowners*, 2nd ed. Miscellaneous Publication PUB-SS-989. Wisconsin Department of Natural Resources, Madison.
- Tkach, V.V. – see Kuzmin et al. 2003.
- Trochlell, P., and D.J. Watermolen. 1995. Report of Canada geese feeding on American toads. *Passenger Pigeon* 57(3):199.
- Vogt, R.C. 1993. Systematics of the false map turtles (*Graptemys pseudogeographica* complex: Reptilia, Testudines, Emydidae). *Annals of the Carnegie Museum* 62(1):1-46.
- Vonesh, J.R. – see Cosentino et al. 2014.

- Walley, H.D. 2000a. Geographic distribution: *Chelydra serpentina* (Common Snapping Turtle). *Herpetological Review* 31(3):184. (Green Co.)
- Walley, H.D. 2000b. Geographic distribution: *Graptemys geographica* (Common Map Turtle). *Herpetological Review* 31(3):184. (Crawford Co.)
- Walley, H.D. 2000c. Geographic distribution: *Rana palustris* (Pickerel Frog). *Herpetological Review* 31(4):252. (Crawford Co.)
- Walley, H.D., and J. Scalleta. 2000. Geographic distribution: *Hyla versicolor* (Eastern Gray Treefrog). *Herpetological Review* 31(3):182. (Crawford Co.)
- Watermolen, D.J. – see Griffin and Watermolen 2004, Trochlell and Watermolen 1995, Wolter and Watermolen 1996.
- Watermolen, D.J. 1995a. An unusually large wood frog (*Rana sylvatica*) found in Door County, Wisconsin. *Bulletin of the Chicago Herpetological Society* 30(3):51-52.
- Watermolen, D.J. 1995b. A key to the eggs of Wisconsin's amphibians. *Research Report* (165):1-12. Wisconsin Department of Natural Resources, Madison.
- Watermolen, D.J. 1996a. Osprey (*Pandion haliaetus*) preys on mudpuppy (*Necturus maculosus maculosus*) in Menominee County. *Michigan Birds and Natural History* 3(3):157-158.
- Watermolen, D.J. 1996b. Natural history notes: *Plethodon cinereus*. Brooding behavior (Egg transport). *Herpetological Review* 27(3):136, 138.
- Watermolen, D.J. 1996c. Notes on the leech *Desserobdella picta* (Hirudinea: Glossiphoniidae). *Journal of Freshwater Ecology* 11(2):211-217. (Includes information on leech parasites of turtles.)
- Watermolen, D.J. 1996d. Book review: *Geographic Distributions of the Amphibians and Reptiles of Wisconsin* by G.S. Casper. *Bulletin of the Chicago Herpetological Society* 31(12):222-223.
- Watermolen, D.J. 1996e. Bibliography and indices to the herpetological papers published in freshwater biology and limnology journals, 1950-1995. *Smithsonian Herpetological Information Service Series* (111):1-9.
- Watermolen, D.J. 1996f. All about amphibians. *Wisconsin Natural Resources Magazine* 20(2):4-7, 10.
- Watermolen, D.J. 1996g. Raising amphibians at home. *Wisconsin Natural Resources Magazine* 20(2):8-9.
- Watermolen, D.J. 1996h. Hodags and frogs. *Wisconsin Natural Resources Magazine* 20(4):30. (Comments in response to a "Readers write" letter.)
- Watermolen, D.J. 1996i. Disappearing toad trick. *Wisconsin Natural Resources Magazine* 20(4):30. (Comments in response to a "Readers write" letter.)
- Watermolen, D.J. 1996j. Calling frogs names. *Wisconsin Natural Resources Magazine* 20(6):30. (Comments in response to a "Readers write" letter.)
- Watermolen, D.J. 1997a. The amphibians of the Yahara River Watershed. *Yahara Watershed Journal* (2):7-10.
- Watermolen, D.J. 1997b. Leaping into a pond of activity. *Yahara Watershed Journal* (2):36-37.
- Watermolen, D.J. 1997c. Raising amphibians in the classroom. *Yahara Watershed Journal* (2):38-40.
- Watermolen, D.J. 1998a. A new parasite record from the tiger salamander (*Ambystoma tigrinum*). *Bulletin of the Chicago Herpetological Society* 33(12):262.
- Watermolen, D.J. 1998b. Activity: Raising frogs in the classroom. *EE News: Environmental Education in Wisconsin* 14(3):15-17.
- Watermolen, D.J. 2000. Anomalous squamation on a brown snake (*Storeria dekayi*). *Bulletin of the Chicago Herpetological Society* 35(12):280.

- Watermolen, D.J. 2014. Parasites and disease-causing organisms reported from Wisconsin amphibians and reptiles. Miscellaneous Publication PUB-SS-1145. Bureau of Science Services, Wisconsin Department of Natural Resources, Madison.
- Watermolen, D.J., and J.F. Amrhein. 1995. Mercury levels in snapping turtles, *Chelydra serpentina*, from Wisconsin. *Bulletin of the Chicago Herpetological Society* 30(11):230-233.
- Watermolen, D.J., and G.S. Casper. 1993. Geographic distribution: *Notophthalmus viridescens louisianensis* (Central Newt). *Herpetological Review* 24(3):107. (Door Co.)
- Watermolen, D.J., and H. Gilbertson. 1996. Keys for the identification of Wisconsin's larval amphibians. *Wisconsin Endangered Resources Report* (109):1-14. Wisconsin Department of Natural Resources, Madison.
- Weaver, R.J. – see Cosentino et al. 2014.
- Willey, A. – see Cosentino et al. 2014.
- Wolf, K., G.L. Bullock, C.E. Dunbar, and M.C. Quimby. 1968. Tadpole edema virus: A viscerotropic pathogen for anuran amphibians. *Journal of Infectious Diseases* 118(3):253-262.
- Wolf, K., G.L. Bullock, C.E. Dunbar, and M.C. Quimby. 1969. Tadpole edema virus: Pathogenesis and growth studies and additional sites of virus infected bullfrog tadpoles. Pp. 327-336 In M. Mizell (ed.). *Biology of Amphibian Tumors*. Springer-Verlag, New York. (Tadpole edema virus (TEV) was isolated from *L. catesbeiana* tadpoles from Wisconsin.)
- Wolter, P.B., and D.J. Watermolen. 1996. Geographic distribution: *Rana sylvatica* (Wood Frog). *Herpetological Review* 27(1):30. (Dane Co.)



Drawing from S.G. Goodrich's *Animal Kingdom Illustrated Vol 2* (New York, NY: Derby & Jackson, 1859) via ClipArt ETC.